

Modicon TM3 (EcoStruxure Machine Expert - Basic)

Expansion Modules

Programming Guide

Original instructions

EIO0000003345.05
09/2025

Legal Information

The information provided in this document contains general descriptions, technical characteristics and/or recommendations related to products/solutions.

This document is not intended as a substitute for a detailed study or operational and site-specific development or schematic plan. It is not to be used for determining suitability or reliability of the products/solutions for specific user applications. It is the duty of any such user to perform or have any professional expert of its choice (integrator, specifier or the like) perform the appropriate and comprehensive risk analysis, evaluation and testing of the products/solutions with respect to the relevant specific application or use thereof.

The Schneider Electric brand and any trademarks of Schneider Electric SE and its subsidiaries referred to in this document are the property of Schneider Electric SE or its subsidiaries. All other brands may be trademarks of their respective owner.

This document and its content are protected under applicable copyright laws and provided for informative use only. No part of this document may be reproduced or transmitted in any form or by any means (electronic, mechanical, photocopying, recording, or otherwise), for any purpose, without the prior written permission of Schneider Electric.

Schneider Electric does not grant any right or license for commercial use of the document or its content, except for a non-exclusive and personal license to consult it on an "as is" basis.

Schneider Electric reserves the right to make changes or updates with respect to or in the content of this document or the format thereof, at any time without notice.

To the extent permitted by applicable law, no responsibility or liability is assumed by Schneider Electric and its subsidiaries for any errors or omissions in the informational content of this document, as well as any non-intended use or misuse of the content thereof.

Table of Contents

Safety Information.....	5
About the Document.....	6
I/O Configuration General Information.....	11
I/O Configuration General Description	11
TM3 Expansion Modules.....	14
Using I/O Modules in a Configuration	23
Optional I/O Expansion Modules.....	25
Configuring Digital I/Os	29
Latch Principles.....	34
Filtering of Analog Input Channels	35
Adding Transmitter and Receiver Modules.....	36
TM3 Digital I/O Modules Configuration.....	37
Configuring the TM3 Digital I/O Modules	37
TM3 Analog I/O Modules Configuration	38
TM3 Analog Input Modules.....	38
TM3AI2H / TM3AI2HG	38
TM3AI4 / TM3AI4G	39
TM3AI8 / TM3AI8G	41
TM3TI4 / TM3TI4G	43
TM3TI4D / TM3TI4DG.....	45
TM3TI8T / TM3TI8TG	47
TM3 Analog Output Modules	55
TM3AQ2 / TM3AQ2G.....	55
TM3AQ4 / TM3AQ4G.....	56
TM3 Analog Mixed Input/Output Modules	58
TM3AM6 / TM3AM6G	58
TM3TM3 / TM3TM3G.....	61
Analog I/O Modules Diagnostics	65
TM3 Expert I/O Modules Configuration	67
Configuring the TM3XTYS4 Expert Module	67
TM3 Safety Modules Configuration.....	69
Configuring the TM3 Safety Modules.....	69
General Principles: TM3 Safety Functionality Modes	69
Interlock.....	69
Start.....	70
External Device Monitoring (EDM)	72
Synchronization Time Monitoring for TM3SAK6R / TM3SAK6RG	73
General Principles: TM3 Safety Operation Modes	74
Power-On Condition.....	74
Enable Condition	75
Output Response Time.....	76
On Delay and Restart Delay	76
TM3 Safety Modules I/O Mapping	76
TM3 Transmitter and Receiver I/O Modules Configuration	81
Configuring the TM3 Transmitter and Receiver I/O Modules.....	81
Behavior of the TM3 Transmitter and Receiver Modules	81

Firmware Management	84
Glossary	87
Index	89

Safety Information

Important Information

Read these instructions carefully, and look at the equipment to become familiar with the device before trying to install, operate, service, or maintain it. The following special messages may appear throughout this documentation or on the equipment to warn of potential hazards or to call attention to information that clarifies or simplifies a procedure.



The addition of this symbol to a "Danger" or "Warning" safety label indicates that an electrical hazard exists which will result in personal injury if the instructions are not followed.



This is the safety alert symbol. It is used to alert you to potential personal injury hazards. Obey all safety messages that follow this symbol to avoid possible injury or death.

⚠ DANGER
DANGER indicates a hazardous situation which, if not avoided, will result in death or serious injury.

⚠ WARNING
WARNING indicates a hazardous situation which, if not avoided, could result in death or serious injury.

⚠ CAUTION
CAUTION indicates a hazardous situation which, if not avoided, could result in minor or moderate injury.

NOTICE
NOTICE is used to address practices not related to physical injury.

Please Note

Electrical equipment should be installed, operated, serviced, and maintained only by qualified personnel. No responsibility is assumed by Schneider Electric for any consequences arising out of the use of this material.

A qualified person is one who has skills and knowledge related to the construction and operation of electrical equipment and its installation, and has received safety training to recognize and avoid the hazards involved.

About the Document

Document Scope

This document describes the configuration of the TM3 expansion modules for EcoStruxure Machine Expert - Basic. For further information, refer to the separate documents provided in the EcoStruxure Machine Expert - Basic online help.

Validity Note

This document has been updated for the release of EcoStruxure™ Machine Expert - Basic V1.4.

Product Related Information

⚠ WARNING

LOSS OF CONTROL

- Perform a Failure Mode and Effects Analysis (FMEA), or equivalent risk analysis, of your application, and apply preventive and detective controls before implementation.
- Provide a fallback state for undesired control events or sequences.
- Provide separate or redundant control paths wherever required.
- Supply appropriate parameters, particularly for limits.
- Review the implications of transmission delays and take actions to mitigate them.
- Review the implications of communication link interruptions and take actions to mitigate them.
- Provide independent paths for control functions (for example, emergency stop, over-limit conditions, and error conditions) according to your risk assessment, and applicable codes and regulations.
- Apply local accident prevention and safety regulations and guidelines.¹
- Test each implementation of a system for proper operation before placing it into service.

Failure to follow these instructions can result in death, serious injury, or equipment damage.

¹ For additional information, refer to NEMA ICS 1.1 (latest edition), *Safety Guidelines for the Application, Installation, and Maintenance of Solid State Control* and to NEMA ICS 7.1 (latest edition), *Safety Standards for Construction and Guide for Selection, Installation and Operation of Adjustable-Speed Drive Systems* or their equivalent governing your particular location.

⚠ WARNING

UNINTENDED EQUIPMENT OPERATION

- Only use software approved by Schneider Electric for use with this equipment.
- Update your application program every time you change the physical hardware configuration.

Failure to follow these instructions can result in death, serious injury, or equipment damage.

General Cybersecurity Information

In recent years, the growing number of networked machines and production plants has seen a corresponding increase in the potential for cyber threats, such as unauthorized access, data breaches, and operational disruptions. You must, therefore, consider all possible cybersecurity measures to help protect assets and systems against such threats.

To help keep your Schneider Electric products secure and protected, it is in your best interest to implement the cybersecurity best practices as described in the [Cybersecurity Best Practices](#) document.

Schneider Electric provides additional information and assistance:

- [Subscribe to the Schneider Electric security newsletter.](#)
- [Visit the Cybersecurity Support Portal web page to:](#)
 - [Find Security Notifications.](#)
 - [Report vulnerabilities and incidents.](#)
- [Visit the Schneider Electric Cybersecurity and Data Protection Posture web page to:](#)
 - [Access the cybersecurity posture.](#)
 - [Learn more about cybersecurity in the cybersecurity academy.](#)
 - [Explore the cybersecurity services from Schneider Electric.](#)

Available Languages of the Document

The document is available in these languages:

- [English \(EIO0000003345\)](#)
- [French \(EIO0000003346\)](#)
- [German \(EIO0000003347\)](#)
- [Spanish \(EIO0000003348\)](#)
- [Italian \(EIO0000003349\)](#)
- [Chinese \(EIO0000003350\)](#)
- [Portuguese \(EIO0000003351\)](#)
- [Turkish \(EIO0000003352\)](#)

Related Documents

Title of Documentation	Reference Number
EcoStruxure Machine Expert - Basic - Operating Guide	EIO0000003281 (ENG) EIO0000003282 (FRA) EIO0000003283 (GER) EIO0000003284 (SPA) EIO0000003285 (ITA) EIO0000003286 (CHS) EIO0000003287 (POR) EIO0000003288 (TUR)
Modicon TM3 Digital I/O Modules - Hardware Guide	EIO0000003125 (ENG) EIO0000003126 (FRE) EIO0000003127 (GER) EIO0000003128 (SPA) EIO0000003129 (ITA) EIO0000003130 (CHS) EIO0000003424 (POR) EIO0000003425 (TUR)
Modicon TM3 Analog I/O Modules - Hardware Guide	EIO0000003131 (ENG) EIO0000003132 (FRE) EIO0000003133 (GER) EIO0000003134 (SPA) EIO0000003135 (ITA) EIO0000003136 (CHS) EIO0000003426 (POR) EIO0000003427 (TUR)
Modicon TM3 Expert Modules - Hardware Guide	EIO0000003137 (ENG) EIO0000003138 (FRE) EIO0000003139 (GER) EIO0000003140 (SPA) EIO0000003141 (ITA) EIO0000003142 (CHS) EIO0000003428 (POR) EIO0000003429 (TUR)
Modicon TM3 Safety Modules - Hardware Guide	EIO0000003353 (ENG) EIO0000003354 (FRE) EIO0000003355 (GER) EIO0000003356 (SPA) EIO0000003357 (ITA) EIO0000003358 (CHS) EIO0000003359 (POR) EIO0000003360 (TUR)

Title of Documentation	Reference Number
Modicon TM3 Transmitter and Receiver Modules - Hardware Guide	EIO0000003143 (ENG)
	EIO0000003144 (FRE)
	EIO0000003145 (GER)
	EIO0000003146 (SPA)
	EIO0000003147 (ITA)
	EIO0000003148 (CHS)
	EIO0000003430 (POR)
EIO0000003431 (TUR)	
Modicon M221 Logic Controller - Programming Guide	EIO0000003297 (ENG)
	EIO0000003298 (FRE)
	EIO0000003299 (GER)
	EIO0000003300 (SPA)
	EIO0000003301 (ITA)
	EIO0000003302 (CHS)
	EIO0000003303 (POR)
EIO0000003304 (TUR)	

To find documents online, visit the Schneider Electric download center (www.se.com/ww/en/download/).

Information on Non-Inclusive or Insensitive Terminology

As a responsible, inclusive company, Schneider Electric is constantly updating its communications and products that contain non-inclusive or insensitive terminology. However, despite these efforts, our content may still contain terms that are deemed inappropriate by some customers.

Terminology Derived from Standards

The technical terms, terminology, symbols and the corresponding descriptions in the information contained herein, or that appear in or on the products themselves, are generally derived from the terms or definitions of international standards.

In the area of functional safety systems, drives and general automation, this may include, but is not limited to, terms such as *safety*, *safety function*, *safe state*, *fault*, *fault reset*, *malfunction*, *failure*, *error*, *error message*, *dangerous*, etc.

Among others, these standards include:

Standard	Description
IEC 61131-2:2007	Programmable controllers, part 2: Equipment requirements and tests.
ISO 13849-1:2023	Safety of machinery: Safety related parts of control systems. General principles for design.
EN 61496-1:2020	Safety of machinery: Electro-sensitive protective equipment. Part 1: General requirements and tests.
ISO 12100:2010	Safety of machinery - General principles for design - Risk assessment and risk reduction
EN 60204-1:2006	Safety of machinery - Electrical equipment of machines - Part 1: General requirements

Standard	Description
ISO 14119:2013	Safety of machinery - Interlocking devices associated with guards - Principles for design and selection
ISO 13850:2015	Safety of machinery - Emergency stop - Principles for design
IEC 62061:2021	Safety of machinery - Functional safety of safety-related electrical, electronic, and electronic programmable control systems
IEC 61508-1:2010	Functional safety of electrical/electronic/programmable electronic safety-related systems: General requirements.
IEC 61508-2:2010	Functional safety of electrical/electronic/programmable electronic safety-related systems: Requirements for electrical/electronic/programmable electronic safety-related systems.
IEC 61508-3:2010	Functional safety of electrical/electronic/programmable electronic safety-related systems: Software requirements.
IEC 61784-3:2021	Industrial communication networks - Profiles - Part 3: Functional safety fieldbuses - General rules and profile definitions.
2006/42/EC	Machinery Directive
2014/30/EU	Electromagnetic Compatibility Directive
2014/35/EU	Low Voltage Directive

In addition, terms used in the present document may tangentially be used as they are derived from other standards such as:

Standard	Description
IEC 60034 series	Rotating electrical machines
IEC 61800 series	Adjustable speed electrical power drive systems
IEC 61158 series	Digital data communications for measurement and control – Fieldbus for use in industrial control systems

Finally, the term *zone of operation* may be used in conjunction with the description of specific hazards, and is defined as it is for a *hazard zone* or *danger zone* in the *Machinery Directive (2006/42/EC)* and *ISO 12100:2010*.

NOTE: The aforementioned standards may or may not apply to the specific products cited in the present documentation. For more information concerning the individual standards applicable to the products described herein, see the characteristics tables for those product references.

I/O Configuration General Information

Introduction

This chapter provides general information to help you configure TM3 expansion modules for EcoStruxure Machine Expert – Basic.

I/O Configuration General Description

Introduction

In your project, you can add I/O expansion modules to your M221 Logic Controller to increase the number of digital and analog inputs and outputs over those native to the logic controller itself (embedded I/O).

You can add either TM3 or TM2 I/O expansion modules to the logic controller, and further expand the number of I/O via TM3 transmitter and receiver modules to create remote I/O configurations. Special rules apply in all cases when creating local and remote I/O expansions, and when mixing TM2 and TM3 I/O expansion modules (refer to Maximum Hardware Configuration (see Modicon M221 Logic Controller, Hardware Guide)).

The I/O expansion bus of the M221 Logic Controller is created when you assemble the I/O expansion modules to the logic controller. I/O expansion modules are considered as external devices in the logic controller architecture and are treated, as such, differently than the embedded I/Os of the logic controller.

I/O Expansion Bus Errors

If the logic controller cannot communicate with one or more I/O expansion modules that is (are) contained in the program configuration and those modules are not configured as optional modules (refer to [Optional I/O Expansion Modules](#), page 25), the logic controller considers it as an I/O expansion bus error. The unsuccessful communication may be detected during the startup of the logic controller or during runtime, and there may be any number of causes. Causes of communication exception on the I/O expansion bus include, among other things, disconnection of or physically missing I/O modules, electromagnetic radiation beyond published environmental specifications, or otherwise, inoperative modules.

During runtime, if an I/O expansion bus error is detected, the diagnostic information is contained in %SW118 and %SW120 system words, and the red LED indicator labeled **ERR** flashes.

Active I/O Expansion Bus Error Handling

System bit %S106 is set to 0 by default to specify the use of active I/O error handling. The application can set this bit to 1 to use passive I/O error handling instead.

By default, when the logic controller detects a TM3 module in bus communication error, it sets the bus to a "bus off" condition whereby the TM3 expansion module outputs, the input image and the output image are set to 0. A TM3 expansion module is considered to be in bus communication error when an I/O exchange with the expansion module has been unsuccessful for at least two consecutive bus task cycles. When a bus communication error occurs, bit n of %SW120 is set to 1, where n is the expansion module number, and %SW118 bit 14 is set to 0.

Normal I/O expansion bus operation can only be restored after eliminating the source of the error and performing one of the following:

- Power cycle
- New application download
- Application request through a rising edge on bit %S107
- With EcoStruxure Machine Expert - Basic by selection of the **Initialize Controller** command

Passive I/O Expansion Bus Error Handling

The application can set system bit %S106 to 1 to use passive I/O error handling. This error handling is provided to afford compatibility with previous firmware versions and previous controllers that the M221 Logic Controller replaces.

When passive I/O error handling is in use, the controller attempts to continue data bus exchanges with the modules during bus communication errors. While the expansion bus error persists, the logic controller attempts to re-establish communication on the bus with incommunicative modules, depending on the type and version of I/O expansion module, TM3 or TM2:

- For TM3 I/O expansion modules SV⁽¹⁾ less than 2.0, the value of the I/O channels is maintained (**Maintain values**) for approximately 10 seconds while the logic controller attempts to re-establish communication. If the logic controller cannot re-establish communications within that time, all affected TM3 I/O expansion outputs are set to 0.
- For TM3 I/O expansion modules SV⁽¹⁾ greater than or equal to 2.0, the value of the I/O channels is maintained (**Maintain values**) for approximately 1 second while the logic controller attempts to re-establish communication. If the logic controller cannot re-establish communications within that time, all affected TM3 I/O expansion outputs are set to fallback outputs configured in the [Configuring Digital Outputs in the Configuration Tab, page 32](#).
- For the TM2 I/O expansion modules that may be part of the configuration, the value of the I/O channels is maintained indefinitely. That is to say, the outputs of the TM2 I/O expansion modules are set to **Maintain values** until either power is cycled on the logic controller system, or you issue an **Initialize Controller** command with EcoStruxure Machine Expert - Basic.

⁽¹⁾SV refers to the version and is printed on the product label.

In these cases, the logic controller continues to solve logic and the embedded I/O continues to be managed by the application (Managed by application (see [Modicon M221, Logic Controller, Programming Guide](#))) while it attempts to re-establish communication with the incommunicative I/O expansion modules. If the communication is successful, the I/O expansion modules resume to be managed by the application. If communication with the I/O expansion modules is unsuccessful, you must resolve the reason for the unsuccessful communication, and then cycle power on the logic controller system, or issue an **Initialize Controller** command with EcoStruxure Machine Expert - Basic.

The value of the incommunicative I/O expansion modules input image is maintained and the output image value is set by the application.

Further, if the incommunicative I/O module(s) disturb the communication with unaffected modules, the unaffected modules will also be considered in error and their corresponding bit in %SW120 will be set to 1. However, with the ongoing data exchanges that characterize the Passive I/O Expansion Bus Error Handling, the unaffected modules will nonetheless apply the data sent, and will not apply the fallback values as for the incommunicative module.

Therefore, you must monitor within your application the state of the bus and the error state of the module(s) on the bus, and to take the appropriate action necessary given your particular application.

▲ WARNING**UNINTENDED EQUIPMENT OPERATION**

- Include in your risk assessment the possibility of unsuccessful communication between the logic controller and any I/O expansion modules.
- If the “Maintain values” option deployed during an I/O expansion bus error is incompatible with your application, use alternate means to control your application for such an event.
- Monitor the state of the I/O expansion bus using the dedicated system words and take appropriate actions as determined by your risk assessment.

Failure to follow these instructions can result in death, serious injury, or equipment damage.

For more information on the actions taken upon start-up of the logic controller when an I/O expansion bus error is detected, refer to *Optional I/O Expansion Modules*, page 25.

Restarting the I/O Expansion Bus

When active I/O error handling is being applied, that is, TM3 outputs set to 0 when a bus communication error is detected, the application can request a restart of the I/O expansion bus while the logic controller is still running (without the need for a Cold Start, Warm Start, power cycle, or application download).

System bit %S107 is available to request restarts of the I/O expansion bus. The default value of this bit is 0. The application can set %S107 to 1 to request a restart of the I/O expansion bus. On detection of a rising edge of this bit, the logic controller reconfigures and restarts the I/O expansion bus if all of the following conditions are met:

- %S106 is set to 0 (that is, I/O expansion bus activity is stopped)
- %SW118 bit 14 is set to 0 (I/O expansion bus is in error)
- At least one bit of %SW120 is set to 1 (at least one expansion module is in bus communication error)

If %S107 is set to 1 and any of the above conditions is not met, the logic controller takes no action.

Match Software and Hardware Configuration

The I/O that may be embedded in your controller is independent of the I/O that you may have added in the form of I/O expansion. It is important that the logical I/O configuration within your program matches the physical I/O configuration of your installation. If you add or remove any physical I/O to or from the I/O expansion bus or, depending on the controller reference, to or from the controller (in the form of cartridges), then you must update your application configuration. This is also true for any field bus devices you may have in your installation. Otherwise, there is the potential that the expansion bus or field bus no longer function while the embedded I/O that may be present in your controller continues to operate.

▲ WARNING**UNINTENDED EQUIPMENT OPERATION**

Update the configuration of your program each time you add or delete any type of I/O expansions on your I/O bus, or you add or delete any devices on your field bus.

Failure to follow these instructions can result in death, serious injury, or equipment damage.

Presentation of the Optional Feature for I/O Expansion Modules

I/O expansion modules can be marked as optional in the configuration. The **Optional module** feature provides a more flexible configuration by the acceptance of the definition of modules that are not physically attached to the logic controller. Therefore, a single application can support multiple physical configurations of I/O expansion modules, allowing a greater degree of scalability without the necessity of maintaining multiple application files for the same application.

You must be fully aware of the implications and impacts of marking I/O modules as optional in your application, both when those modules are physically absent and present when running your machine or process. Be sure to include this feature in your risk analysis.

⚠ WARNING

UNINTENDED EQUIPMENT OPERATION

Include in your risk analysis each of the variations of I/O configurations that can be realized marking I/O expansion modules as optional, and in particular the establishment of TM3 Safety modules (TM3S...) as optional I/O modules, and make a determination whether it is acceptable as it relates to your application.

Failure to follow these instructions can result in death, serious injury, or equipment damage.

NOTE: For more details about this feature, refer to *Optional I/O Expansion Modules*, page 25.

TM3 Expansion Modules

Introduction

The range of TM3 expansion modules includes:

- Digital modules, classified as follows:
 - Input modules, page 15
 - Output modules, page 15
 - Mixed input/output modules, page 17
- Analog modules, classified as follows:
 - Input modules, page 18
 - Output modules, page 19
 - Mixed input/output modules, page 20
- Expert modules, page 21
- Transmitter and receiver modules, page 21
- Safety modules, page 22

TM3 Digital Input Modules

The following table shows the TM3 digital input expansion modules, with corresponding channel type, nominal voltage/current, and terminal type. For information on configuration of these modules, refer to the TM3 Digital I/O Modules Configuration, page 37 section.

Reference	Channels	Channel Type	Voltage Current	Terminal Type / Pitch
TM3DI8A	8	Regular inputs	120 Vac 7.5 mA	Removable screw terminal block / 5.08 mm
TM3DI8	8	Regular inputs	24 Vdc 7 mA	Removable screw terminal block / 5.08 mm
TM3DI8G	8	Regular inputs	24 Vdc 7 mA	Removable spring terminal block / 5.08 mm
TM3DI16	16	Regular inputs	24 Vdc 7 mA	Removable screw terminal block / 3.81 mm
TM3DI16G	16	Regular inputs	24 Vdc 7 mA	Removable spring terminal block / 3.81 mm
TM3DI16K	16	Regular inputs	24 Vdc 5 mA	HE10 (MIL 20) connector
TM3DI32K	32	Regular inputs	24 Vdc 5 mA	HE10 (MIL 20) connector

TM3 Digital Output Modules

The following table shows the TM3 digital output modules, with corresponding channel type, nominal voltage/current, and terminal type. For information on configuration of these modules, refer to the TM3 Digital I/O Modules Configuration, page 37 section.

Reference	Channels	Channel Type	Voltage Current	Terminal Type / Pitch
TM3DQ8R	8	Relay outputs	24 Vdc / 240 Vac 7 A maximum per common line / 2 A maximum per output	Removable screw terminal block / 5.08 mm
TM3DQ8RG	8	Relay outputs	24 Vdc / 240 Vac 7 A maximum per common line / 2 A maximum per output	Removable spring terminal block / 5.08 mm
TM3DQ8T	8	Regular transistor outputs (source)	24 Vdc 4 A maximum per common line/0.5 A maximum per output	Removable screw terminal block / 5.08 mm
TM3DQ8TG	8	Regular transistor outputs (source)	24 Vdc 4 A maximum per common line/0.5 A maximum per output	Removable spring terminal block / 5.08 mm
TM3DQ8U	8	Regular transistor outputs (sink)	24 Vdc 4 A maximum per common line/0.5 A maximum per output	Removable screw terminal block / 5.08 mm

Reference	Channels	Channel Type	Voltage Current	Terminal Type / Pitch
TM3DQ8UG	8	Regular transistor outputs (sink)	24 Vdc 4 A maximum per common line/0.5 A maximum per output	Removable spring terminal block / 5.08 mm
TM3DQ16R	16	Relay outputs	24 Vdc / 240 Vac 8 A maximum per common line / 2 A maximum per output	Removable screw terminal block / 3.81 mm
TM3DQ16RG	16	Relay outputs	24 Vdc / 240 Vac 8 A maximum per common line / 2 A maximum per output	Removable spring terminal block / 3.81 mm
TM3DQ16T	16	Regular transistor outputs (source)	24 Vdc 4 A maximum per common line / 0.5 A maximum per output	Removable screw terminal block / 3.81 mm
TM3DQ16TG	16	Regular transistor outputs (source)	24 Vdc 4 A maximum per common line / 0.5 A maximum per output	Removable spring terminal block / 3.81 mm
TM3DQ16U	16	Regular transistor outputs (sink)	24 Vdc 2 A maximum per common line / 0.3 A maximum per output	Removable screw terminal block / 3.81 mm
TM3DQ16UG	16	Regular transistor outputs (sink)	24 Vdc 2 A maximum per common line / 0.3 A maximum per output	Removable spring terminal block / 3.81 mm
TM3DQ16TK	16	Regular transistor outputs (source)	24 Vdc 2 A maximum per common line / 0.1 A maximum per output	HE10 (MIL 20) connector
TM3DQ16UK	16	Regular transistor outputs (sink)	24 Vdc 2 A maximum per common line / 0.1 A maximum per output	HE10 (MIL 20) connector
TM3DQ32TK	32	Regular transistor outputs (source)	24 Vdc 2 A maximum per common line / 0.1 A maximum per output	HE10 (MIL 20) connector
TM3DQ32UK	32	Regular transistor outputs (sink)	24 Vdc 2 A maximum per common line / 0.1 A maximum per output	HE10 (MIL 20) connector

TM3 Digital Mixed Input/Output Modules

This following table shows the TM3 mixed I/O modules, with corresponding channel type, nominal voltage/current, and terminal type. For information on configuration of these modules, refer to the TM3 Digital I/O Modules Configuration, page 37 section.

Reference	Channels	Channel Type	Voltage Current	Terminal Type / Pitch
TM3DM8R	4	Regular inputs	24 Vdc 7 mA	Removable screw terminal block / 5.08 mm
	4	Relay outputs	24 Vdc / 240 Vac 7 A maximum per common line / 2 A maximum per output	
TM3DM8RG	4	Regular inputs	24 Vdc 7 mA	Removable spring terminal block / 5.08 mm
	4	Relay outputs	24 Vdc / 240 Vac 7 A maximum per common line / 2 A maximum per output	
TM3DM24R	16	Regular inputs	24 Vdc 7 mA	Removable screw terminal block / 3.81 mm
	8	Relay outputs	24 Vdc / 240 Vac 7 A maximum per common line / 2 A maximum per output	
TM3DM24RG	16	Regular inputs	24 Vdc 7 mA	Removable spring terminal block / 3.81 mm
	8	Relay outputs	24 Vdc / 240 Vac 7 A maximum per common line / 2 A maximum per output	

TM3 Analog Input Modules

The following table shows the TM3 analog input expansion modules, with corresponding channel type, nominal voltage/current, and terminal type. For information on configuration of these modules, refer to the TM3 Analog Input Modules Configuration, page 38 section.

Reference	Resolution	Channels	Channel Type	Mode	Terminal Type / Pitch
TM3AI2H	16 bit, or 15 bit + sign	2	inputs	0...10 Vdc -10...+10 Vdc 0...20 mA 4...20 mA	Removable screw terminal block / 5.08 mm
TM3AI2HG	16 bit, or 15 bit + sign	2	inputs	0...10 Vdc -10...+10 Vdc 0...20 mA 4...20 mA	Removable spring terminal block / 5.08 mm
TM3AI4	12 bit, or 11 bit + sign	4	inputs	0...10 Vdc -10...+10 Vdc 0...20 mA 4...20 mA	Removable screw terminal block / 3.81 mm
TM3AI4G	12 bit, or 11 bit + sign	4	inputs	0...10 Vdc -10...+10 Vdc 0...20 mA 4...20 mA	Removable spring terminal blocks / 3.81 mm
TM3AI8	12 bit, or 11 bit + sign	8	inputs	0...10 Vdc -10...+10 Vdc 0...20 mA 4...20 mA 0...20 mA extended 4...20 mA extended	Removable screw terminal block / 3.81 mm
TM3AI8G	12 bit, or 11 bit + sign	8	inputs	0...10 Vdc -10...+10 Vdc 0...20 mA 4...20 mA 0...20 mA extended 4...20 mA extended	Removable spring terminal blocks / 3.81 mm
TM3TI4	16 bit, or 15 bit + sign	4	inputs	0...10 Vdc -10...+10 Vdc 0...20 mA 4...20 mA Thermocouple PT100/1000 NI100/1000	Removable screw terminal block / 3.81 mm

Reference	Resolution	Channels	Channel Type	Mode	Terminal Type / Pitch
TM3TI4G	16 bit, or 15 bit + sign	4	inputs	0...10 Vdc -10...+10 Vdc 0...20 mA 4...20 mA Thermocouple PT100/1000 NI100/1000	Removable spring terminal blocks / 3.81 mm
TM3TI4D	16 bit, or 15 bit + sign	4	inputs	Thermocouple	Removable screw terminal block / 3.81 mm
TM3TI4DG	16 bit, or 15 bit + sign	4	inputs	Thermocouple	Removable spring terminal blocks / 3.81 mm
TM3TI8T	16 bit, or 15 bit + sign	8	inputs	Thermocouple NTC/PTC	Removable screw terminal block / 3.81 mm
TM3TI8TG	16 bit, or 15 bit + sign	8	inputs	Thermocouple NTC/PTC	Removable spring terminal blocks / 3.81 mm

TM3 Analog Output Modules

The following table shows the TM3 analog output modules, with corresponding channel type, nominal voltage/current, and terminal type. For information on configuration of these modules, refer to the [TM3 Analog Output Modules Configuration](#), page 55 section.

Reference	Resolution	Channels	Channel Type	Mode	Terminal Type / Pitch
TM3AQ2	12 bit, or 11 bit + sign	2	outputs	0...10 Vdc -10...+10 Vdc 0...20 mA 4...20 mA	Removable screw terminal block / 5.08 mm
TM3AQ2G	12 bit, or 11 bit + sign	2	outputs	0...10 Vdc -10...+10 Vdc 0...20 mA 4...20 mA	Removable spring terminal block / 5.08 mm
TM3AQ4	12 bit, or 11 bit + sign	4	outputs	0...10 Vdc -10...+10 Vdc 0...20 mA 4...20 mA	Removable screw terminal block / 5.08 mm
TM3AQ4G	12 bit, or 11 bit + sign	4	outputs	0...10 Vdc -10...+10 Vdc 0...20 mA 4...20 mA	Removable spring terminal block / 5.08 mm

TM3 Analog Mixed Input/Output Modules

This following table shows the TM3 analog mixed I/O modules, with corresponding channel type, nominal voltage/current, and terminal type. For information on configuration of these modules, refer to the TM3 Analog Mixed I/O Modules Configuration, page 58 section.

Reference	Resolution	Channels	Channel Type	Mode	Terminal Type / Pitch
TM3AM6	12 bit, or 11 bit + sign	4	inputs	0...10 Vdc	Removable screw terminal block / 3.81 mm
		2	outputs	-10...+10 Vdc 0...20 mA 4...20 mA	
TM3AM6G	12 bit, or 11 bit + sign	4	inputs	0...10 Vdc	Removable spring terminal block / 3.81 mm
		2	outputs	-10...+10 Vdc 0...20 mA 4...20 mA	
TM3TM3	16 bit, or 15 bit + sign	2	inputs	0...10 Vdc -10...+10 Vdc 0...20 mA 4...20 mA Thermocouple PT100/1000 NI100/1000	Removable screw terminal block / 5.08 mm
	12 bit, or 11 bit + sign	1	output	0...10 Vdc -10...+10 Vdc 0...20 mA 4...20 mA	
TM3TM3G	16 bit, or 15 bit + sign	2	inputs	0...10 Vdc -10...+10 Vdc 0...20 mA 4...20 mA Thermocouple PT100/1000 NI100/1000	Removable spring terminal block / 5.08 mm
	12 bit, or 11 bit + sign	1	output	0...10 Vdc -10...+10 Vdc 0...20 mA 4...20 mA	

TM3 Expert Modules

The following table shows the TM3 expert expansion modules, with corresponding terminal type. For information on configuration of these modules, refer to the TM3 Expert I/O Modules Configuration, page 67 section.

Reference	Description	Terminal Type / Pitch
TM3XTYS4	TeSys module	4 front connectors RJ-45 1 removable power supply connector / 5.08 mm

TM3 Transmitter and Receiver Modules

The following table shows the TM3 transmitter and receiver expansion modules, with corresponding terminal type. For information on configuration of these modules, refer to the TM3 Transmitter and Receiver I/O Modules Configuration, page 81 section.

Reference	Description	Terminal Type / Pitch
TM3XTRA1	Data transmitter module for remote I/O	1 front connector RJ-45 1 screw for functional ground connection
TM3XREC1	Data receiver module for remote I/O	1 front connector RJ-45 1 removable power supply connector / 5.08 mm

TM3 Safety Modules

This table contains the TM3 safety modules, with the corresponding channel type, nominal voltage/current, and terminal type:

Reference	Function Category	Channels	Channel type	Voltage Current	Terminal type
TM3SAC5R	1 function, up to category 3	1 or 2 ⁽¹⁾	Safety input	24 Vdc	3.81 mm (0.15 in.) and 5.08 mm (0.20 in.), removable screw terminal block
		Start ⁽²⁾	Input	100 mA maximum	
		3 in parallel	Relay outputs Normally open	24 Vdc / 230 Vac 6 A maximum per output	
TM3SAC5RG	1 function, up to category 3	1 or 2 ⁽¹⁾	Safety input	24 Vdc	3.81 mm (0.15 in.) and 5.08 mm (0.20 in.), removable spring terminal block
		Start ⁽²⁾	Input	100 mA maximum	
		3 in parallel	Relay outputs Normally open	24 Vdc / 230 Vac 6 A maximum per output	
TM3SAF5R	1 function, up to category 4	2 ⁽¹⁾	Safety inputs	24 Vdc	3.81 mm (0.15 in.) and 5.08 mm (0.20 in.), removable screw terminal block
		Start	Input	100 mA maximum	
		3 in parallel	Relay outputs Normally open	24 Vdc / 230 Vac 6 A maximum per output	
TM3SAF5RG	1 function, up to category 4	2 ⁽¹⁾	Safety inputs	24 Vdc	3.81 mm (0.15 in.) and 5.08 mm (0.20 in.), removable spring terminal block
		Start	Input	100 mA maximum	
		3 in parallel	Relay outputs Normally open	24 Vdc / 230 Vac 6 A maximum per output	
TM3SAFL5R	2 functions, up to category 3	2 ⁽¹⁾	Safety inputs	24 Vdc	3.81 mm (0.15 in.) and 5.08 mm (0.20 in.), removable screw terminal block
		Start	Input	100 mA maximum	
		3 in parallel	Relay outputs Normally open	24 Vdc / 230 Vac 6 A maximum per output	
TM3SAFL5RG	2 functions, up to category 3	2 ⁽¹⁾	Safety inputs	24 Vdc	3.81 mm (0.15 in.) and 5.08 mm (0.20 in.), removable spring terminal block
		Start	Input	100 mA maximum	
		3 in parallel	Relay outputs Normally open	24 Vdc / 230 Vac 6 A maximum per output	
TM3SAK6R	3 functions, up to category 4	1 or 2 ⁽¹⁾	Safety inputs	24 Vdc	3.81 mm (0.15 in.) and 5.08 mm (0.20 in.), removable screw terminal block
		Start	Input	100 mA maximum	
		3 in parallel	Relay outputs Normally open	24 Vdc / 230 Vac 6 A maximum per output	
TM3SAK6RG	3 functions, up to category 4	1 or 2 ⁽¹⁾	Safety inputs	24 Vdc	3.81 mm (0.15 in.) and 5.08 mm (0.20 in.), removable spring terminal block
		Start	Input	100 mA maximum	
		3 in parallel	Relay outputs Normally open	24 Vdc / 230 Vac 6 A maximum per output	
⁽¹⁾ Depending on external wiring ⁽²⁾ Non-monitored start					

For more information on the terms methods used concerning functional safety as they apply to the TM3 Safety Modules, refer to the sections TM3 Safety Functionality modes, page 69 and TM3 Safety Operation Modes, page 74.

Using I/O Modules in a Configuration

Adding a Module

The following steps explain how to add an expansion module to the logic controller in an EcoStruxure Machine Expert - Basic project:

Step	Action
1	Click the Configuration tab in the EcoStruxure Machine Expert - Basic window.
2	In the catalog area, click one of the following module types to expand the list of expansion modules: <ul style="list-style-type: none"> • TM3 Digital I/O Modules • TM3 Analog I/O Modules • TM3 Expert I/O Modules • TM2 Digital I/O Modules • TM2 Analog I/O Modules
3	Select an expansion module from the list. Result: The description of the physical characteristics of the selected expansion module appears in the bottom of the catalog area.
4	Drag the selected expansion module to the editor area and drop the module on the right-hand side of the controller or the last expansion module in the configuration or the TM3 bus coupler. Result: The module is added under the My Controller > I/O Bus branch of the hardware tree and the description of the physical characteristics of the selected module appears in the bottom of the editor area. With a TM3 bus coupler, the module is added under the device TM3BC• > I/O Bus branch of the hardware tree.

Inserting a Module Between two Existing Modules

Drag the module between two modules, or between the controller and the first module until a vertical green bar appears and then drop the module.

NOTE: The addresses change when you change the position of modules by inserting a new module. For example, if you move an input module from position 4 to position 2, the addresses change from I4.x to I2.x, and all corresponding addresses in the program are automatically renamed.

The I/O that may be embedded in your controller is independent of the I/O that you may have added in the form of I/O expansion. It is important that the logical I/O configuration within your program matches the physical I/O configuration of your installation. If you add or remove any physical I/O to or from the I/O expansion bus or, depending on the controller reference, to or from the controller (in the form of cartridges), then you must update your application configuration. This is also true for any field bus devices you may have in your installation. Otherwise, there is the potential that the expansion bus or field bus no longer function while the embedded I/O that may be present in your controller continues to operate.

▲ WARNING
UNINTENDED EQUIPMENT OPERATION
Update the configuration of your program each time you add or delete any type of I/O expansions on your I/O bus, or you add or delete any devices on your field bus.
Failure to follow these instructions can result in death, serious injury, or equipment damage.

Replacing an Existing Expansion Module

You can replace an existing module with a new module by dragging the new module and dropping it onto the module to be replaced.

A message appears asking you to confirm the operation. Click **Yes** to continue.

Removing a Module

You can remove an expansion module by pressing the **Delete** key or by right-clicking the module and clicking **Remove** on the contextual menu that appears.

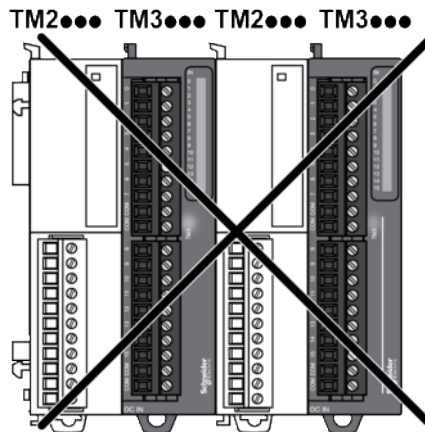
If the expansion module contains at least one address being used in a program, a message appears asking you to confirm the operation. Click **Yes** to continue.

Mixing Expansion Module Types

You can mix different I/O module types on the same logic controller (for example, TM2 and TM3 modules).

NOTE: The I/O bus of the logic controller operates at the speed of the slower module type. For example, when both TM2 and TM3 modules are used, the I/O bus of the logic controller operates at the speed of the TM2 modules.

Place any TM2 module(s) at the end of your configuration after any TM3 module(s):



Maximum Hardware Configuration

EcoStruxure Machine Expert - Basic displays a message when:

- The maximum number of modules supported by the logic controller is exceeded.
- The total power consumption of all expansion modules directly connected to the logic controller exceeds the maximum current delivered by the logic controller.

Refer to the hardware guide of your controller for more information on the maximum supported configuration.

Optional I/O Expansion Modules

Presentation

I/O expansion modules can be marked as optional in the configuration. The **Optional module** feature provides a more flexible configuration by the acceptance of the definition of modules that are not physically attached to the logic controller. Therefore, a single application can support multiple physical configurations of I/O expansion modules, allowing a greater degree of scalability without the necessity of maintaining multiple application files for the same application.

Without the **Optional module** feature, when the logic controller starts up the I/O expansion bus (following a power cycle, application download or initialization command), it compares the configuration defined in the application with the physical I/O modules attached to the I/O bus. Among other diagnostics made, if the logic controller determines that there are I/O modules defined in the configuration that are not physically present on the I/O bus, an error is detected and the I/O bus does not start.

With the **Optional module** feature, the logic controller ignores the absent I/O expansion modules that you have marked as optional, which then allows the logic controller to start the I/O expansion bus.

The logic controller starts the I/O expansion bus at configuration time (following a power cycle, application download, or initialization command) even if optional expansion modules are not physically connected to the logic controller.

The following module types can be marked as optional:

- TM3 I/O expansion modules
- TM2 I/O expansion modules

NOTE: TM3 Transmitter/Receiver modules (TM3XTRA1 and the TM3XREC1) and TMC2 cartridges cannot be marked as optional.

The application must be configured with a functional level of at least **Level 3.2** for modules marked as optional to be recognized as such by the logic controller.

You must be fully aware of the implications and impacts of marking I/O modules as optional in your application, both when those modules are physically absent and present when running your machine or process. Be sure to include this feature in your risk analysis.

▲ WARNING

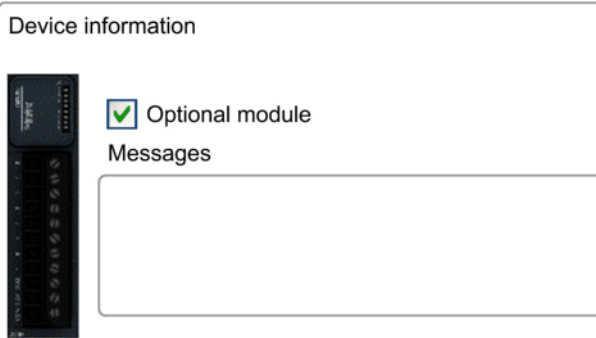
UNINTENDED EQUIPMENT OPERATION

Include in your risk analysis each of the variations of I/O configurations that can be realized marking I/O expansion modules as optional, and in particular the establishment of TM3 Safety modules (TM3S...) as optional I/O modules, and make a determination whether it is acceptable as it relates to your application.

Failure to follow these instructions can result in death, serious injury, or equipment damage.

Marking an I/O Expansion Module as Optional in Offline Mode

To add a module and mark it as optional in the configuration:

Step	Action
1	Drag-and-drop the I/O expansion module from the catalog to the editor.
2	In the Device information area, select the Optional module check box: 

To mark an existing I/O expansion module as optional in the configuration:

Step	Action
1	Select the I/O expansion module in the editor.
2	In the Device information area, select the Optional module check box.

Optional I/O Expansion Modules in Online Mode

EcoStruxure Machine Expert - Basic operates in online mode when a physical connection to a logic controller has been established.

When in EcoStruxure Machine Expert - Basic online mode, the modification of the **Optional module** feature is disabled. You can visualize the downloaded configuration in the application:

- An I/O expansion module represented in yellow is marked as optional and not physically connected to the logic controller at start-up. An information message to that effect is displayed in the **Device information** area.
- An I/O expansion module represented in red is not marked as optional and not detected at start-up. An information message to that effect is displayed in the **Device information** area.

The selection of the **Optional module** feature is used by the logic controller to start the I/O bus. The following system words are updated to indicate the status of the physical I/O bus configuration:

System Word	Comment
%SW118 Logic controller status word	<p>Bits 13 and 14 are pertinent to the I/O module status relative to the I/O bus.</p> <p>Bit 13, if FALSE, indicates that there are mandatory modules as defined by the I/O expansion bus configuration that are absent or otherwise inoperative when the logic controller attempts to start the I/O expansion bus. In this case, the I/O bus does not start.</p> <p>Bit 14, if FALSE, indicates that one or more modules have ceased communication with the logic controller after the I/O expansion bus is started. This is the case whether an I/O expansion module is defined as mandatory or as an optional module but present at start-up.</p>
%SW119 I/O expansion module configuration	<p>Each bit, starting with bit 1 (bit 0 is reserved), is dedicated to a configured I/O expansion module and indicates whether the module is optional (TRUE) or mandatory (FALSE) when the controller attempts to start the I/O bus.</p>
%SW120 I/O expansion module status	<p>Each bit, starting with bit 1 (bit 0 is reserved), is dedicated to a configured I/O expansion module and indicates the status of the module.</p> <p>When the logic controller attempts to start the I/O bus, if the value of %SW120 is non-zero (indicating that an error is detected for at least one of the modules), the I/O expansion bus does not start unless the corresponding bit in %SW119 is set to TRUE (indicating the module is marked as an optional module).</p> <p>When the I/O bus is started, if the value of %SW120 is modified by the system, it indicates that an error is detected on one or more I/O expansion modules (regardless of the Optional module feature).</p>

Internal ID Codes

Logic controllers identify expansion modules by a simple internal ID code. This ID code is not specific to each reference, but identifies the structure of the expansion module. Therefore, different references can share the same ID code.

If you declare two modules with the same internal ID code next to each other in the configuration and both are declared as optional, a message appears at the bottom of the **Configuration** window. There must be at least one non-optional module between two optional modules.

This table shows the internal ID codes of expansion modules:

Modules sharing the same internal ID code	ID code
TM2DDI16DT, TM2DDI16DK	0
TM2DRA16RT, TM2DDO16UK, TM2DDO16TK	1
TM2DDI8DT, TM2DAI8DT	4
TM2DRA8RT, TM2DDO8UT, TM2DDO8TT	5
TM2DDO32TK, TM2DDO32UK	3
TM2DMM24DRF, TM2DDI32DK	2
TM2DMM8DRT	6
TM2ALM3LT, TM2AMI2HT, TM2AMI2LT, TM2AMI4LT, TM2AMI8HT, TM2AMM3HT, TM2AMM6HT, TM2AMO1HT, TM2ARI8HT, TM2ARI8LRJ, TM2ARI8LT, TM2AVO2HT	96
TM3DI16K, TM3DI16, TM3DI16G	128
TM3DQ16R, TM3DQ16RG, TM3DQ16T, TM3DQ16TG, TM3DQ16TK, TM3DQ16U, TM3DQ16UG, TM3DQ16UK	129
TM3DQ32TK, TM3DQ32UK	131
TM3DI8, TM3DI8G, TM3DI8A	132
TM3DQ8R, TM3DQ8RG, TM3DQ8T, TM3DQ8TG, TM3DQ8U, TM3DQ8UG	133
TM3DM8R, TM3DM8RG	134
TM3DM24R, TM3DM24RG	135
TM3SAK6R, TM3SAK6RG	144
TM3SAF5R, TM3SAF5RG	145
TM3SAC5R, TM3SAC5RG	146
TM3SAFL5R, TM3SAFL5RG	147
TM3AI2H, TM3AI2HG	192
TM3AI4, TM3AI4G	193
TM3AI8, TM3AI8G	194
TM3AQ2, TM3AQ2G	195
TM3AQ4, TM3AQ4G	196
TM3AM6, TM3AM6G	197
TM3TM3, TM3TM3G	198
TM3TI4, TM3TI4G	199
TM3TI4D, TM3TI4DG	203
TM3TI8T, TM3TI8TG	200
TM3DI32K	130
TM3XTYS4	136

Configuring Digital I/Os


Overview

You can configure digital I/Os of your expansion module using:

- **Configuration** tab:
 - Digital inputs, page 30
 - Digital outputs, page 32
- **Programming** tab, page 33.

Selecting the Functional Mode in Offline Mode

To add a module and select its functional mode in the configuration:

Step	Action
1	Drag-and-drop the digital I/O expansion module from the catalog to the editor.
2	<p>In the Device information area, select the Functional mode:</p>  <p>NOTE: The functional mode Latch, Filter, Fallback is only available on digital expansion modules with firmware version ≥ 28 (SV ≥ 2.0).</p>

To select the **Functional mode** of an existing I/O expansion module in the configuration:

Step	Action
1	Select the digital I/O expansion module in the editor.
2	In the Device information area, select the Functional mode .

NOTE: The modification of the **Functional mode** is disabled when EcoStruxure Machine Expert - Basic is in online mode.

Configuring Digital Inputs in the Configuration Tab

Follow these steps to display and configure the digital input properties in the **Configuration** tab:

Step	Description																																										
1	Click the Configuration tab in the EcoStruxure Machine Expert - Basic window.																																										
2	<p>In the hardware tree, click MyController > IO Bus > Module x > Digital inputs, where x is the expansion module number on the controller. Result: The digital input properties of the selected module are displayed in the editor area, for example:</p> <table border="1" data-bbox="592 506 1436 725"> <thead> <tr> <th colspan="7">Digital inputs</th> </tr> <tr> <th></th> <th>Used</th> <th>Address</th> <th>Symbol</th> <th>Filter</th> <th>Latch</th> <th>Comment</th> </tr> </thead> <tbody> <tr> <td></td> <td><input type="checkbox"/></td> <td>%I2.0</td> <td></td> <td>4 ms</td> <td>No</td> <td></td> </tr> <tr> <td></td> <td><input type="checkbox"/></td> <td>%I2.1</td> <td></td> <td>300 µs</td> <td>Rising edge</td> <td></td> </tr> <tr> <td></td> <td><input type="checkbox"/></td> <td>%I2.2</td> <td></td> <td>No Filter</td> <td>Falling edge</td> <td></td> </tr> <tr> <td></td> <td><input type="checkbox"/></td> <td>%I2.3</td> <td></td> <td>12 ms</td> <td>Both edges</td> <td></td> </tr> </tbody> </table>	Digital inputs								Used	Address	Symbol	Filter	Latch	Comment		<input type="checkbox"/>	%I2.0		4 ms	No			<input type="checkbox"/>	%I2.1		300 µs	Rising edge			<input type="checkbox"/>	%I2.2		No Filter	Falling edge			<input type="checkbox"/>	%I2.3		12 ms	Both edges	
Digital inputs																																											
	Used	Address	Symbol	Filter	Latch	Comment																																					
	<input type="checkbox"/>	%I2.0		4 ms	No																																						
	<input type="checkbox"/>	%I2.1		300 µs	Rising edge																																						
	<input type="checkbox"/>	%I2.2		No Filter	Falling edge																																						
	<input type="checkbox"/>	%I2.3		12 ms	Both edges																																						
3	<p>Edit the properties to configure the digital inputs:</p> <ul style="list-style-type: none"> • Used: Indicates whether the corresponding address is being used in the program or not. • Address: Displays the address of the digital input on the expansion module. For details on addressing I/O objects, refer to <i>I/O Addressing</i> (see <i>EcoStruxure Machine Expert - Basic, Generic Functions Library Guide</i>). • Symbol: Allows you to specify a symbol to associate with the corresponding digital input object to be used in the program. Double-click in the Symbol column, type the symbol name of the corresponding object, and press Enter. • Filter: see <i>Configuring the Latch and Filter Parameters</i>, page 30. • Latch: see <i>Configuring the Latch and Filter Parameters</i>, page 30. • Comment: Allows you to specify a comment to associate with the corresponding digital input object. Double-click in the Comment column, type a comment for the corresponding object, and press Enter. 																																										
4	Click Apply to save the changes.																																										

Configuring the Latch and Filter Parameters

You can select the type of edge for the **Latch** parameter, refer to *Latch Principles*, page 34:

- **Rising edge**
- **Falling edge**
- **Both edges**
- None

The **Filter** parameter reduces the effect of bounce on a controller digital input.

NOTE: The lower the **Filter** value, the higher the effects of electromagnetic interference.

You can configure these parameters on the following modules:

- TM3DI• except TM3DI8A
- TM3DM•

This table describes how to configure the **Latch** and **Filter** parameters:

Step	Action
1	Select the I/O expansion module in the editor.
2	In the device information area, select the Latch, Filter, Fallback value in the Functional Mode .
3	Select Digital inputs in the hardware tree.
4	Configure the parameters.

This table describes the **Latch** and **Filter** parameters:

Parameter	Type	Value	Default Value	Description
Latch	Enumeration of BYTE	No Both edges Rising edge Falling edge	No	Latching allows incoming pulses with amplitude widths shorter than controller scan time to be captured and recorded.
Filter	Enumeration of BYTE	No filter 300 μ s 500 μ s 1 ms 2 ms 4 ms 12 ms	4 ms	Filtering value reduces the effect of bounce on a controller input.

Configuring Digital Outputs in the Configuration Tab

Follow these steps to display and configure the digital output properties in the **Configuration** tab:

Step	Description																				
1	Click the Configuration tab in the EcoStruxure Machine Expert - Basic window.																				
2	<p>In the hardware tree, click MyController > IO Bus > Module x > Digital outputs, where x is the expansion module number on the controller. Result: The digital output properties of the selected module are displayed in the editor area, for example:</p> <div style="border: 1px solid gray; padding: 5px; margin: 10px 0;"> <p>Digital outputs</p> <table border="1"> <thead> <tr> <th>Used</th> <th>Address</th> <th>Symbol</th> <th>Fallback value</th> <th>Comment</th> </tr> </thead> <tbody> <tr> <td><input type="checkbox"/></td> <td>%Q3.0</td> <td></td> <td>0</td> <td></td> </tr> <tr> <td><input type="checkbox"/></td> <td>%Q3.1</td> <td></td> <td>1</td> <td></td> </tr> <tr> <td><input type="checkbox"/></td> <td>%Q3.2</td> <td></td> <td>0</td> <td></td> </tr> </tbody> </table> </div>	Used	Address	Symbol	Fallback value	Comment	<input type="checkbox"/>	%Q3.0		0		<input type="checkbox"/>	%Q3.1		1		<input type="checkbox"/>	%Q3.2		0	
Used	Address	Symbol	Fallback value	Comment																	
<input type="checkbox"/>	%Q3.0		0																		
<input type="checkbox"/>	%Q3.1		1																		
<input type="checkbox"/>	%Q3.2		0																		
3	<p>Edit the properties to configure the digital outputs:</p> <ul style="list-style-type: none"> • Used: Indicates whether the corresponding address is being used in the program or not. • Address: Displays the address of the digital output on the expansion module. For details on addressing I/O objects, refer to I/O Addressing (see EcoStruxure Machine Expert - Basic, Generic Functions Library Guide). • Symbol: Allows you to specify a symbol to associate with the corresponding digital output object to be used in the program. Double-click in the Symbol column, type the symbol name of the corresponding object, and press Enter. • Fallback value: see Configuring the Fallback Parameter, page 32. • Comment: Allows you to specify a comment to associate with the corresponding digital output object. Double-click in the Comment column, type a comment for the corresponding object, and press Enter. 																				
4	Click Apply to save the changes.																				

Configuring the Fallback Parameter

The **Fallback** parameter allows you to specify the value to apply to the corresponding output (**Fallback** to 0 or **Fallback** to 1) when the logic controller enters the STOPPED state or an exception state.

You can configure this parameter on the following modules with SV ≥ 2.0:

- TM3DQ•
- TM3DM•

This table describes how to configure the **Fallback** parameter:

Step	Action
1	Select the I/O expansion module in the editor.
2	In the device information area, select the Latch , Filter , Fallback value in the Functional Mode .
3	Select Digital outputs in the hardware tree.
4	Configure the parameter.

This table describes the **Fallback** parameter:

Parameter	Type	Value	Default Value	Description
Fallback	Enumeration of BYTE	0	0	The objective of the fallback behavior is to control the outputs when the controller leaves the RUNNING state.
		1		

If the **Fallback Behavior** option is set to **Maintain values**, the output retains its value when the logic controller enters the STOPPED state or an exception state.

For more details on maintaining output values, refer to Fallback Behavior (see EcoStruxure Machine Expert - Basic, Operating Guide).

Displaying Configuration Details in the Programming Tab

The **Programming** tab displays configuration details of the inputs/outputs and allows you to update programming-related properties such as symbols and comments.

Follow these steps to view and update details of I/O modules in the **Programming** tab:

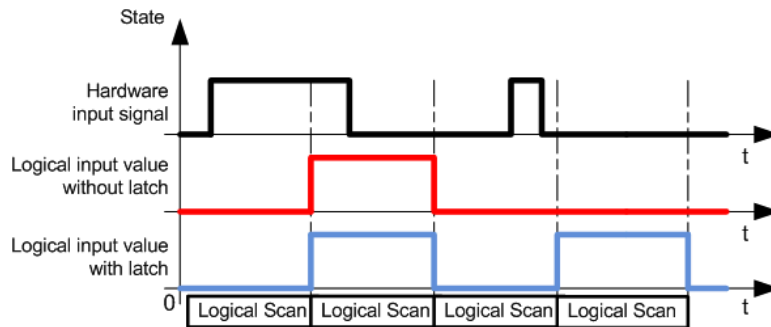
Step	Description																								
1	Click the Programming tab in the EcoStruxure Machine Expert - Basic window.																								
2	<p>In the left-hand area of the Programming tab, click on the Tools tab and from the I/O objects branch, select one of the following I/O types to display the properties:</p> <ul style="list-style-type: none"> • Digital inputs • Digital outputs • Analog inputs • Analog outputs <p>Result: A list of all embedded and expansion module I/O addresses appears in the lower central area of the EcoStruxure Machine Expert - Basic window, for example:</p> <div style="border: 1px solid gray; padding: 5px; margin: 10px 0;"> <p>Digital output properties</p> <table border="1"> <thead> <tr> <th>Used</th> <th>Address</th> <th>Symbol</th> <th>Comment</th> </tr> </thead> <tbody> <tr> <td><input type="checkbox"/></td> <td>%Q0.6</td> <td></td> <td></td> </tr> <tr> <td><input type="checkbox"/></td> <td>%Q0.7</td> <td></td> <td></td> </tr> <tr> <td><input type="checkbox"/></td> <td>%Q1.0</td> <td></td> <td>CH1 Control direction 1</td> </tr> <tr> <td><input type="checkbox"/></td> <td>%Q1.1</td> <td></td> <td>CH1 Control direction 2</td> </tr> <tr> <td><input type="checkbox"/></td> <td>%Q1.2</td> <td></td> <td></td> </tr> </tbody> </table> </div>	Used	Address	Symbol	Comment	<input type="checkbox"/>	%Q0.6			<input type="checkbox"/>	%Q0.7			<input type="checkbox"/>	%Q1.0		CH1 Control direction 1	<input type="checkbox"/>	%Q1.1		CH1 Control direction 2	<input type="checkbox"/>	%Q1.2		
Used	Address	Symbol	Comment																						
<input type="checkbox"/>	%Q0.6																								
<input type="checkbox"/>	%Q0.7																								
<input type="checkbox"/>	%Q1.0		CH1 Control direction 1																						
<input type="checkbox"/>	%Q1.1		CH1 Control direction 2																						
<input type="checkbox"/>	%Q1.2																								
3	<p>Scroll down to the range of addresses corresponding to the expansion module you are configuring. The following properties are displayed:</p> <ul style="list-style-type: none"> • Used: Indicates whether the corresponding address is being used in the program or not. • Address: Displays the address of the digital output on the expansion module. For details on addressing I/O objects, refer to I/O Addressing (see EcoStruxure Machine Expert - Basic, Generic Functions Library Guide). • Symbol: Allows you to specify a symbol to associate with the corresponding I/O object to be used in the program. Double-click in the Symbol column, type the symbol name of the corresponding object, and press Enter. If a symbol already exists, right-click in the Symbol column and choose Search and Replace to find and replace occurrences of this symbol throughout the program and/or program comments. • Comment: Allows you to specify a comment to associate with the corresponding I/O object. Double-click in the Comment column, type a comment for the corresponding object, and press Enter. 																								
4	Click Apply to save the changes.																								

Latch Principles

Introduction

The **Latch** parameter allows incoming pulses with amplitude widths shorter than the controller scan time to be captured and recorded.

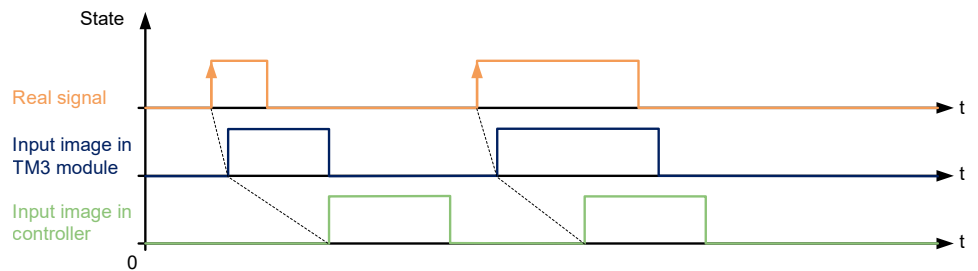
The following timing diagram illustrates the latching effects:



Several edge types can be selected for this parameter.

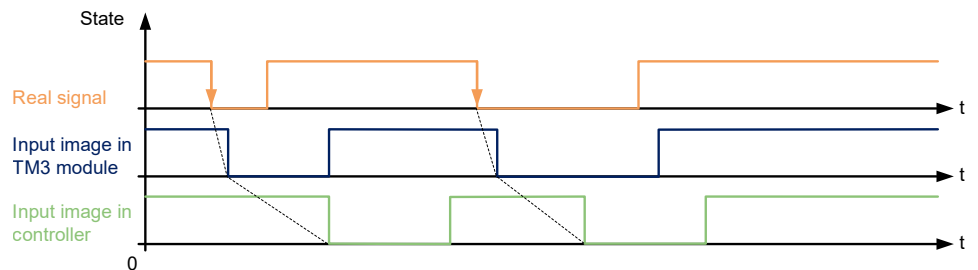
Rising Edge

Latch rising edge allows the detection of a positive pulse whose width corresponds to the bounce filter value.



Falling Edge

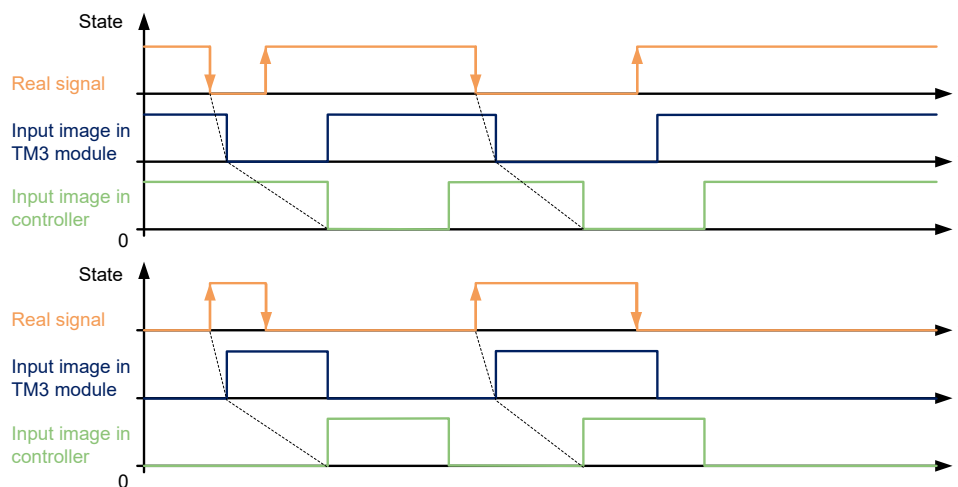
Latch falling edge allows the detection of a negative pulse whose width corresponds to the bounce filter value.



Both Edges

Latch both edges allows the detection of an inverted pulse whose width corresponds to the bounce filter value.

When the I/O module is read by the controller, the level-state of the input is taken as reference to detect the next pulse.



Filtering of Analog Input Channels

Presentation

Sampling and filtering can be applied to the signal received on analog input channels:

1. Sampling

The sampling filter first calculates a moving average of the input values to remove random variations and highlight cyclic components.

The sampling period used can be 1 ms, 10 ms or 100 ms, depending on the type of TM3 analog I/O module used.

In the **Configuration** tab, you can choose between two sampling period values for some TM3 analog I/O modules:

- a lower value (fast)
- a higher value (slow)

2. Filter (Optional)

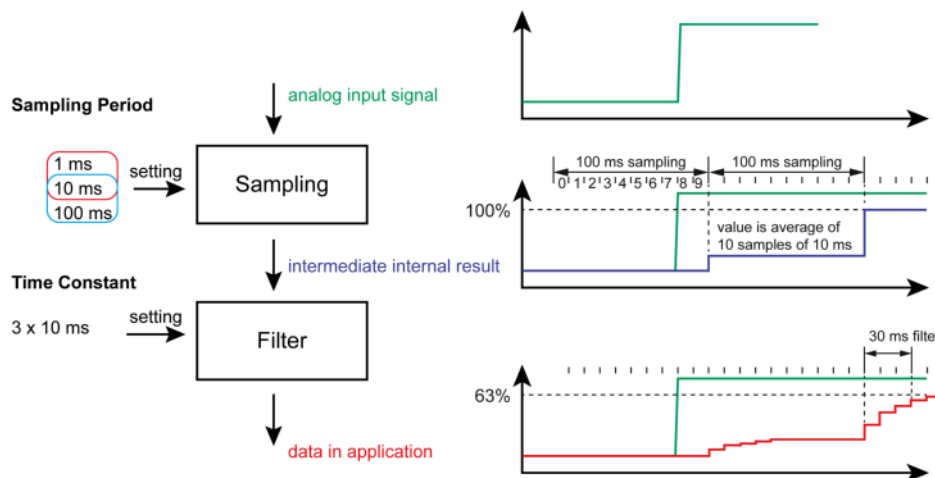
A first-order filter is then applied to the values generated by the sampling filter. Specify the time constant to use, in units of 10 ms. If 0 is specified, no filtering is applied and the values calculated by the Sampling filter are available in the application.

You configure sampling and filtering in the Configuration properties of TM3 Analog expansion modules:

Analog inputs											
Used	Address	Symbol	Type	Scope	Minimum	Maximum	Filter level	Filter Unit	Sampling	Units	Comment
<input type="checkbox"/>	%IW0.0		0 - 10 V	Normal	0	1000	0				
<input type="checkbox"/>	%IW0.1		0 - 10 V	Normal	0	1000	0				

Example of Sampling and Filter

The following illustration shows an example of the application of sampling and filter:



Adding Transmitter and Receiver Modules

Overview

TM3 Transmitter and Receiver modules increase the maximum number of I/O modules in a configuration and allow expansion modules to be installed in a remote location. For details, refer to the *TM3 Transmitter and Receiver Modules - Hardware Guide*.

Procedure

Before adding the Transmitter and Receiver modules, create an EcoStruxure Machine Expert - Basic project and add a logic controller as described in the *EcoStruxure Machine Expert - Basic Operating Guide*.

In EcoStruxure Machine Expert - Basic, the Transmitter and Receiver modules are paired together as a single reference. To add the Transmitter and Receiver module pair to a configuration:

Step	Description
1	Click the Configuration tab in the EcoStruxure Machine Expert - Basic window.
2	In the catalog area, click TM3 Expert I/O Modules to expand the list of expansion modules.
3	Select TM3_XTRA1_XREC1 from the list. Result: The description of the physical characteristics of the Transmitter and Receiver module appears in the bottom of the catalog area.
4	Drag the selected Transmitter and Receiver module to the editor area and drop the module on the right-hand side of the controller or the last expansion module in the configuration. Result: The Transmitter and Receiver module is added under the My Controller > I/O Bus branch of the hardware tree and the description of the physical characteristics of the Transmitter and Receiver module appears in the bottom of the editor area.
5	Add further expansion modules to the right of the Transmitter and Receiver module pair, up to the maximum number of modules allowed. NOTE: Only one Transmitter and Receiver module pair can be added to a configuration.

TM3 Digital I/O Modules Configuration

Introduction

This chapter describes how to configure the TM3 digital I/O modules.

Configuring the TM3 Digital I/O Modules

Introduction

The range of TM3 digital I/O expansion modules includes:

- TM3 Digital Input Modules, page 15
- TM3 Digital Output Modules, page 15
- TM3 Digital Mixed Input/Output Modules, page 17

Configuring the Modules

Configuration tab: Displaying Configuration Details in the Configuration Tab, page 30 describes how to view the configuration of these modules.

Programming tab: Displaying Configuration Details in the Programming Tab, page 33 describes how to view and update programming-related properties of these modules.

TM3 Analog I/O Modules Configuration

Introduction

This chapter describes how to configure the TM3 analog I/O modules.

The range of TM3 analog I/O expansion modules includes:

- TM3 Analog Input Modules, page 18
- TM3 Analog Output Modules, page 19
- TM3 Analog Mixed Input/Output Modules, page 20

TM3 Analog Input Modules

TM3AI2H / TM3AI2HG

Introduction

The TM3AI2H (screw terminal block) / TM3AI2HG (spring terminal block) expansion modules feature 2 analog input channels with 16-bit resolution.

The channel input types are:

- 0...10 V
- -10...+10 V
- 0...20 mA
- 4...20 mA

For information on the diagnostic codes produced by each input type, refer to *Analog I/O Modules Diagnostics*, page 65.

For further hardware information, refer to TM3AI2H / TM3AI2HG (see Modicon TM3, *Analog I/O Modules, Hardware Guide*).

NOTE: If you have physically wired the analog channel for a voltage signal and you configure the channel for a current signal in EcoStruxure Machine Expert - Basic, you may damage the analog circuit.

NOTICE

INOPERABLE EQUIPMENT

Verify that the physical wiring of the analog circuit is compatible with the software configuration for the analog channel.

Failure to follow these instructions can result in equipment damage.

Configuring the Module

For each input, you can define:

Parameter	Value	Default Value	Description
Used	True/False	False	Indicates whether the address is being used in a program.
Address	%IWx.0...%IWx.1	%IWx.y	The address of the input channel, where x is the module number and y is the channel number.
Type	Not used 0 - 10 V -10 - +10 V 0 - 20 mA 4 - 20 mA	Not used	Choose the mode of the channel.
Scope	Normal	Normal	The range of values for a channel.
Min.	0 - 10 V	-32768...32767	Specifies the lower measurement limit.
	-10 - +10 V	-10000	
	0 - 20 mA	0	
	4 - 20 mA	4000	
Max.	0 - 10 V	-32768...32767	Specifies the upper measurement limit.
	-10 - +10 V	10000	
	0 - 20 mA	20000	
	4 - 20 mA	20000	
Filter (x 10ms)	0...1000	0	Specifies the first order filter time constant (0...10 s) in increments of 10 ms, page 35.
Sampling	1ms/Channel	1ms/Channel	Specifies the sampling period of the channel, page 35.

Programming tab: Displaying Configuration Details in the Programming Tab, page 33 describes how to view and update programming-related properties of these modules.

TM3AI4 / TM3AI4G

Introduction

The TM3AI4 (screw terminal block) / TM3AI4G (spring terminal block) expansion modules feature 4 analog input channels with 12-bit resolution.

The channel input types are:

- 0...10 V
- -10...+10 V
- 0...20 mA
- 4...20 mA

For information on the diagnostic codes produced by each input type, refer to Analog I/O Modules Diagnostics, page 65.

For further hardware information, refer to TM3AI4 / TM3AI4G (see Modicon TM3, Analog I/O Modules, Hardware Guide).

NOTE: If you have physically wired the analog channel for a voltage signal and you configure the channel for a current signal in EcoStruxure Machine Expert - Basic, you may damage the analog circuit.

NOTICE**INOPERABLE EQUIPMENT**

Verify that the physical wiring of the analog circuit is compatible with the software configuration for the analog channel.

Failure to follow these instructions can result in equipment damage.

Configuring the Module

For each input, you can define:

Parameter	Value	Default Value	Description	
Used	True/False	False	Indicates whether the address is being used in a program.	
Address	%IWx.0...%IWx.3	%IWx.y	The address of the input channel, where x is the module number and y is the channel number.	
Type	Not used 0 - 10 V -10 - +10 V 0 - 20 mA 4 - 20 mA	Not used	Choose the mode of the channel.	
Scope	Normal	Normal	The range of values for a channel.	
Min.	0 - 10 V	-32768...32767 ⁽¹⁾	0	Specifies the lower measurement limit.
	-10 - +10 V		-10000	
	0 - 20 mA		0	
	4 - 20 mA		4000	
Max.	0 - 10 V	-32768...32767 ⁽¹⁾	10000	Specifies the upper measurement limit.
	-10 - +10 V		10000	
	0 - 20 mA		20000	
	4 - 20 mA		20000	
Filter (x 10ms)	0...1000	0	Specifies the filtering time, page 35 (0...10 s) in increments of 10 ms.	
Sampling	1ms/Channel 10ms/Channel	1ms/Channel	Specifies the sampling period, page 35 of the channel. If an input filter is active, the sampling period is set internally to 10 ms.	
⁽¹⁾ The 12-bit data (0 to 4095) processed in the analog I/O module can be linear-converted to a value between -32768 and 32767.				

Programming tab: Displaying Configuration Details in the Programming Tab, page 33 describes how to view and update programming-related properties of these modules.

TM3AI8 / TM3AI8G

Introduction

The TM3AI8 (screw terminal block) / TM3AI8G (spring terminal block) expansion modules feature 8 analog input channels with 12-bit resolution.

The channel input types are:

- 0...10 V
- -10...+10 V
- 0...20 mA
- 4...20 mA
- 0...20 mA extended
- 4...20 mA extended

For information on the diagnostic codes produced by each input type, refer to *Analog I/O Modules Diagnostics*, page 65.

For further hardware information, refer to TM3AI8 / TM3AI8G (see Modicon TM3, *Analog I/O Modules, Hardware Guide*).

NOTE: If you have physically wired the analog channel for a voltage signal and you configure the channel for a current signal in EcoStruxure Machine Expert - Basic, you may damage the analog circuit.

NOTICE

INOPERABLE EQUIPMENT

Verify that the physical wiring of the analog circuit is compatible with the software configuration for the analog channel.

Failure to follow these instructions can result in equipment damage.

Configuring the Module

For each input, you can define:

Parameter	Value	Default Value	Description
Used	True/False	False	Indicates whether the address is being used in a program.
Address	%IWx.0...%IWx.7	%IWx.y	The address of the input channel, where x is the module number and y is the channel number.
Type	Not used 0 - 10 V -10 - +10 V 0 - 20 mA 4 - 20 mA 0 - 20 mA extended⁽²⁾ 4 - 20 mA extended⁽²⁾	Not used	Choose the mode of the channel.
Scope	Normal	Normal	The range of values for a channel.
Min.	0 - 10 V	-32768...32767 ⁽¹⁾	Specifies the lower measurement limit.
	-10 - +10 V	0	
	0 - 20 mA	-10000	
	4 - 20 mA	0	
	0 - 20 mA extended⁽²⁾	4000	
	4 - 20 mA extended⁽²⁾	0	
Max.	0 - 10 V	-32768...32767 ⁽¹⁾	Specifies the upper measurement limit.
	-10 - +10 V	10000	
	0 - 20 mA	10000	
	4 - 20 mA	20000	
	0 - 20 mA extended⁽²⁾	20000	
	4 - 20 mA extended⁽²⁾	23540	
Filter (x 10ms)	0...1000	0	Specifies the first order filter time, page 35 constant (0...10 s) in increments of 10 ms.
Sampling	1ms/Channel 10ms/Channel	1ms/Channel	Specifies the sampling period, page 35 of the channel. If an input filter is active, the sampling period is set internally to 10 ms.

(1) The 12-bit data (0 to 4095) processed in the analog I/O module can be linear-converted to a value between -32768 and 32767.

(2) The extended ranges are supported by modules from hardware version (PV) 03, firmware version (SV) 1.4.

The firmware version of TM3 expansion modules is displayed in the Commissioning window (see EcoStruxure Machine Expert - Basic, Operating Guide).

NOTE: The application must be configured with a functional level (see EcoStruxure Machine Expert - Basic, Operating Guide) of at least Level 5.0 to be able to use the extended ranges.

Programming tab: Displaying Configuration Details in the Programming Tab, page 33 describes how to view and update programming-related properties of these modules.

TM3TI4 / TM3TI4G

Introduction

The TM3TI4 (screw terminal block) / TM3TI4G (spring terminal block) expansion modules feature 4 analog input channels with 16-bit resolution.

The channel input types are:

- 0...10 V
- -10...+10 V
- 0...20 mA
- 4...20 mA
- K thermocouple
- J thermocouple
- R thermocouple
- S thermocouple
- B thermocouple
- E thermocouple
- T thermocouple
- N thermocouple
- C thermocouple
- PT100
- PT1000
- NI100
- NI1000

For information on the diagnostic codes produced by each input type, refer to *Analog I/O Modules Diagnostics*, page 65.

For further hardware information, refer to TM3TI4 / TM3TI4G (see *Modicon TM3, Analog I/O Modules, Hardware Guide*).

NOTE: If you have physically wired the analog channel for a voltage signal and you configure the channel for a current signal in EcoStruxure Machine Expert - Basic, you may damage the analog circuit.

NOTICE

INOPERABLE EQUIPMENT

Verify that the physical wiring of the analog circuit is compatible with the software configuration for the analog channel.

Failure to follow these instructions can result in equipment damage.

Configuring the Module

For each input, you can define:

Parameter	Value	Default Value	Description	
Used	True/False	False	Indicates whether the address is being used in a program.	
Address	%IWx.0...%IWx.3	%IWx.y	The address of the input channel, where x is the module number and y is the channel number.	
Type	Not used 0 - 10 V -10 - +10 V 0 - 20 mA 4 - 20 mA K Thermocouple J Thermocouple R Thermocouple S Thermocouple B Thermocouple E Thermocouple T Thermocouple N Thermocouple C Thermocouple PT100 PT1000 NI100 NI1000	Not used	Choose the mode of the channel.	
Scope	Normal Celsius (0.1°C) Fahrenheit (0.1°F) Fahrenheit (0.2°F)*	Normal	The range of values for a channel. * Only for B and C thermocouples.	
Min.	0 - 10 V	-32768...32767	0	Specifies the lower measurement limit.
	-10 - +10 V		-10000	
	0 - 20 mA		0	
	4 - 20 mA		4000	
	Temperature		See the table below	
Max.	0 - 10 V	-32768...32767	10000	Specifies the upper measurement limit.
	-10 - +10 V		10000	
	0 - 20 mA		20000	
	4 - 20 mA		20000	
	Temperature		See the table below	
Filter (x 10ms)	0...1000	0	Specifies the first order filter time, page 35 constant (0...10 s) in increments of 10 ms.	

Parameter	Value	Default Value	Description
Sampling	10ms/Channel 100ms/Channel	100ms/Channel	Specifies the sampling period, page 35 of the channel. If an input filter is active, the sampling period is set internally to 10 ms.
Units	- 0.1 °C 0.1 °F 0.2 °F	-	Indicates the temperature unit.

Type	Normal		Celsius (0.1 °C)		Fahrenheit		
	Minimum	Maximum	Minimum	Maximum	Minimum	Maximum	Unit
K Thermocouple	-32768	32767	-2000	13000	-3280	23720	0.1 °F
J Thermocouple	-32768	32767	-2000	10000	-3280	18320	0.1 °F
R Thermocouple	-32768	32767	0	17600	320	32000	0.1 °F
S Thermocouple	-32768	32767	0	17600	320	32000	0.1 °F
B Thermocouple	-32768	32767	0	18200	160	16540	0.2 °F
E Thermocouple	-32768	32767	-2000	8000	-3280	14720	0.1 °F
T Thermocouple	-32768	32767	-2000	4000	-3280	7520	0.1 °F
N Thermocouple	-32768	32767	-2000	13000	-3280	23720	0.1 °F
C Thermocouple	-32768	32767	0	23150	160	20995	0.2 °F
PT100	-32768	32767	-2000	8500	-3280	15620	0.1 °F
PT1000	-32768	32767	-2000	6000	-3280	11120	0.1 °F
NI100	-32768	32767	-600	1800	-760	3560	0.1 °F
NI1000	-32768	32767	-600	1800	-760	3560	0.1 °F

Programming tab: Displaying Configuration Details in the Programming Tab, page 33 describes how to view and update programming-related properties of these modules.

TM3TI4D / TM3TI4DG

Introduction

The TM3TI4D (screw terminal block) / TM3TI4DG (spring terminal block) expansion modules feature 4 analog input channels with 16-bit resolution.

The channel input types are:

- K thermocouple
- J thermocouple
- R thermocouple
- S thermocouple
- B thermocouple
- E thermocouple
- T thermocouple
- N thermocouple
- C thermocouple

For information on the diagnostic codes produced by each input type, refer to Analog I/O Modules Diagnostics, page 65.

For further hardware information, refer to TM3TI4D / TM3TI4DG.

Configuring the Module

For each input, you can define:

Parameter	Value	Default Value	Description
Used	True/False	False	Indicates whether the address is being used in a program.
Address	%IWx.0...%IWx.3	%IWx.y	The address of the input channel, where x is the module number and y is the channel number.
Type	Not used K Thermocouple J Thermocouple R Thermocouple S Thermocouple B Thermocouple E Thermocouple T Thermocouple N Thermocouple C Thermocouple	Not used	Choose the mode of the channel.
Scope	Normal Celsius (0.1°C) Fahrenheit (0.1°F) Fahrenheit (0.2°F)*	Normal	The range of values for a channel. * Only for B and C thermocouples.
Min.	Temperature	See the table below	Specifies the lower measurement limit.
Max.	Temperature	See the table below	Specifies the upper measurement limit.
Filter (x 10ms)	0...1000	0	Specifies the first order filter time, page 35 constant (0...10 s) in increments of 10 ms.
Sampling	10ms/Channel 100ms/Channel	100ms/Channel	Specifies the sampling period, page 35 of the channel. If an input filter is active, the sampling period is set internally to 10 ms.
Units	- 0.1 °C 0.1 °F 0.2 °F	-	Indicates the temperature unit.

Type	Normal		Celsius (0.1 °C)		Fahrenheit		Unit
	Minimum	Maximum	Minimum	Maximum	Minimum	Maximum	
K Thermocouple	-32768	32767	-2000	13000	-3280	23720	0.1 °F
J Thermocouple	-32768	32767	-2000	10000	-3280	18320	0.1 °F
R Thermocouple	-32768	32767	0	17600	320	32000	0.1 °F
S Thermocouple	-32768	32767	0	17600	320	32000	0.1 °F
B Thermocouple	-32768	32767	0	18200	160	16540	0.2 °F
E Thermocouple	-32768	32767	-2000	8000	-3280	14720	0.1 °F
T Thermocouple	-32768	32767	-2000	4000	-3280	7520	0.1 °F
N Thermocouple	-32768	32767	-2000	13000	-3280	23720	0.1 °F
C Thermocouple	-32768	32767	0	23150	160	20995	0.2 °F

Programming tab: Displaying Configuration Details in the Programming Tab, page 33 describes how to view and update programming-related properties of these modules.

TM3TI8T / TM3TI8TG

Introduction

The TM3TI8T (screw terminal block) / TM3TI8TG (spring terminal block) expansion modules feature 8 analog input channels with 16-bit resolution.

The channel input types are:

- K thermocouple
- J thermocouple
- R thermocouple
- S thermocouple
- B thermocouple
- E thermocouple
- T thermocouple
- N thermocouple
- C thermocouple
- NTC thermistor
- PTC thermistor
- Ohmmeter

For information on the diagnostic codes produced by each input type, refer to Analog I/O Modules Diagnostics, page 65.

For further hardware information, refer to TM3TI8T / TM3TI8TG (see Modicon TM3, Analog I/O Modules, Hardware Guide).

NOTE: If you have physically wired the analog channel for a voltage signal and you configure the channel for a current signal in EcoStruxure Machine Expert - Basic, you may damage the analog circuit.

NOTICE

INOPERABLE EQUIPMENT

Verify that the physical wiring of the analog circuit is compatible with the software configuration for the analog channel.

Failure to follow these instructions can result in equipment damage.

Configuring Analog Inputs in the Configuration Tab

Follow these steps to display and configure the analog input properties in the **Configuration** tab:

Step	Description
1	Click the Configuration tab in the EcoStruxure Machine Expert - Basic window.
2	In the hardware tree, click MyController > IO Bus > Module x > Analog inputs , where x is the expansion module number on the controller. Result: The analog input properties of the selected module are displayed in the editor area.
3	Edit the properties to configure the analog inputs: <ul style="list-style-type: none"> • Used: Indicates whether the corresponding address is being used in the program or not. • Address: Displays the address of the analog input on the expansion module. For details on addressing I/O objects, refer to I/O Addressing (see EcoStruxure Machine Expert - Basic, Generic Functions Library Guide). • Symbol: Allows you to specify a symbol to associate with the corresponding analog input object to be used in the program. Double-click in the Symbol column, type the symbol name of the corresponding object, and press Enter. • Type: Displays the type of the analog input on the expansion module. • Configuration: Click the ... button to display the Input Assistant. • Comment: Allows you to specify a comment to associate with the corresponding analog input object. Double-click in the Comment column, type a comment for the corresponding object, and press Enter.
4	Click Apply to save the changes.

Thermocouple Type

This figure represents the analog input assistant for the thermocouple configuration:

%IW1.0 Configuration
✕

Configuration

Type Scope Measurement temperature unit

Minimum range value Filter

Maximum range value Sampling

You can define the following parameters:

Parameter	Value	Description
Type	<ul style="list-style-type: none"> • K Thermocouple • J Thermocouple • R Thermocouple • S Thermocouple • E Thermocouple • T Thermocouple • N Thermocouple • B Thermocouple • C Thermocouple 	Choose the parameter type for the channel.
Scope	<ul style="list-style-type: none"> • Customized • Celsius (0.1 °C) • Fahrenheit (0.1 °F) • Fahrenheit (0.2 °F) 	Choose the parameter scope for the channel.
Minimum range value	See the following table	Specifies the measurement limits (modifiable in Customized scope only).
Maximum range value		
Filter	0...1000	Specifies the first order filter time, page 35 constant (0...10 s) in increments of 10 ms.
Sampling	100 ms/Channel	Specifies the sampling period, page 35 of the channel.
Measurement temperature unit	–	Indicates the temperature unit.

The following table indicates the possible range values for the selected type of thermocouple:

Type	Customized	Range in Celsius	Range in Fahrenheit
K Thermocouple	-32768...32767	-2000...13000 (0.1°C)	-3280...23720 (0.1°F)
J Thermocouple		-2000...10000 (0.1°C)	-3280...18320 (0.1°F)
R Thermocouple		0...17600 (0.1°C)	320...32000 (0.1°F)
S Thermocouple		0...17600 (0.1°C)	320...32000 (0.1°F)
B Thermocouple		0...18200 (0.1°C)	160...16540 (0.2°F)
E Thermocouple		-2000...8000 (0.1°C)	-3280...14720 (0.1°F)
T Thermocouple		-2000...4000 (0.1°C)	-3280...7520 (0.1°F)
N Thermocouple		-2000...13000 (0.1°C)	-3280...23720 (0.1°F)
C Thermocouple		0...23150 (0.1°C)	160...20995 (0.2°F)

NTC Thermistor Type

This figure represents the analog input assistant for the **NTC Thermistor** configuration with **Formula** calculation mode selected (default choice):

You can define the following parameters:

Parameter	Value	Description
Scope	<ul style="list-style-type: none"> Customized Celsius (0.1 °C) Fahrenheit (0.1 °F) 	Choose the parameter scope for the channel.
Minimum range value	-32768...32767	Specifies the measurement limit (modifiable in Customized scope only).
Maximum range value		
Filter	0...1000	Specifies the filtering time (0...10 s) in units of 10 ms.
Sampling	100 ms/Channel	Specifies the sampling period of the channel.
Measurement temperature unit	–	Indicates the temperature unit.

You can use a formula-based or chart-based calculation mode to estimate the measurement range.

NOTE: When changing the calculation mode from **Chart** to **Formula** and conversely, all parameters are reset to their default values.

The following table indicates the range and parameters available for the **Formula** calculation mode:

Parameter	Value	Description
Measurement range		
Tmin (Rth = 200 kΩ)	–	The estimated minimum temperature (calculated using the parameter values).
Tmax (Rth = 100 Ω)	–	The estimated maximum temperature (calculated using the parameter values).
Parameters		
Tref	1...1000 °C (33.8...1832 °F) -273...1000 °C (-459.4...710.33 °F) ⁽¹⁾	Specifies the temperature value.
Rref	1...65535 Ω	Specifies the resistance value in Ohms.
Beta	1...32767	Specifies the sensitivity of NTC probe.

⁽¹⁾ When the application is configured with a functional level of at least **Level 6.0**.

This figure represents the analog input assistant for the **NTC Thermistor** configuration with **Chart** calculation mode selected:

%IW1.3 Configuration ✖

Configuration

Type: NTC Thermistor Scope: Celsius (0.1 °C) Measurement temperature unit: 0.1 °C

Minimum range value: -789 Filter: 0

Maximum range value: 580 Sampling: 100 ms/Channel

Calculation mode

Chart Formula

⚠ 100 Ω ≤ Rth ≤ 200 kΩ

Measurement range

Tmin (Rth = 200 kΩ) = -78.94 °C

Tmax (Rth = 100 Ω) = 58.01 °C

Parameters

R1: 8700 Ω T1: -39 °C

R2: 200 Ω T2: 38 °C

Apply
Cancel

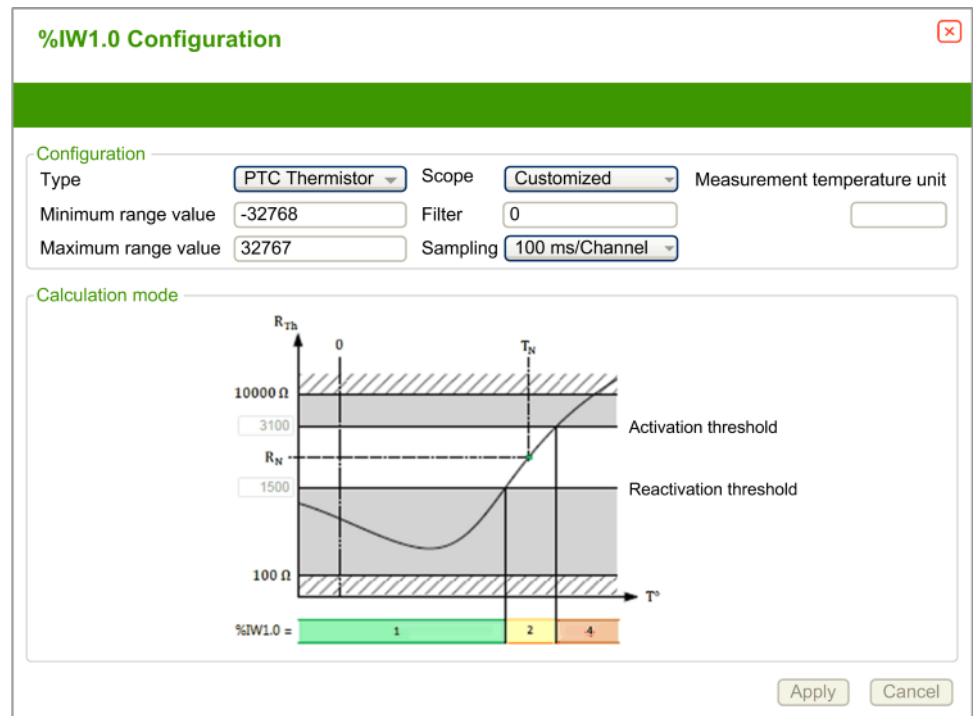
The following table indicates the range and parameters available for the **Chart** calculation mode:

Parameter	Value	Description
Measurement range		
Tmin (Rth = 200 KΩ)	–	The estimated minimum temperature (calculated using the parameter values).
Tmax (Rth = 100 Ω)	–	The estimated maximum temperature (calculated using the parameter values).
Parameters		
R1	100 Ω...200 KΩ	Specifies the resistance 1 in Ohms at temperature T1.
R2	100 Ω...200 KΩ	Specifies the resistance 2 in Ohms at temperature T2.
T1	-272.15...376.85 °C (-458.87...710.33 °F)	Specifies the temperature 1.
T2	0...376.85 °C (32...710.33 °F) -272.15...376.85 °C (-457.87...710.33 °F) ⁽¹⁾	Specifies the temperature 2.

(1) When the application is configured with a functional level of at least **Level 6.0**.

PTC Thermistor Type

This figure represents the analog input assistant for the **PTC Thermistor** configuration:



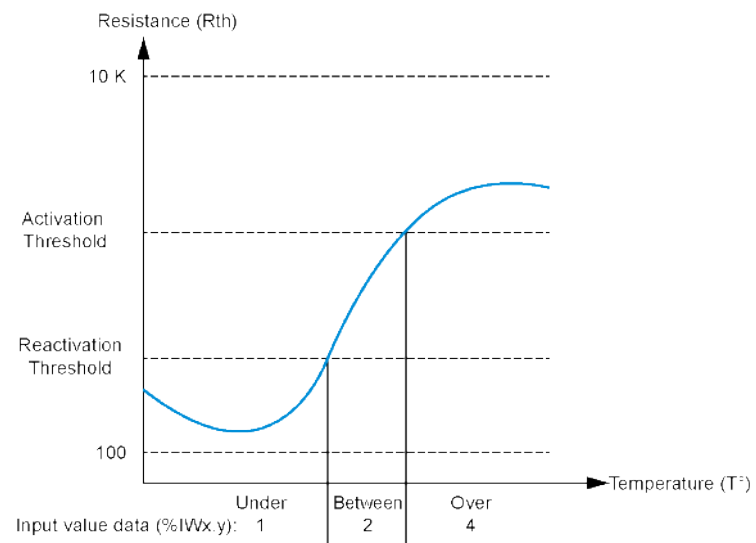
You can define the following parameters:

Parameter	Value	Description
Scope	<ul style="list-style-type: none"> • Customized • Threshold 	Choose the parameter scope for the channel.
Minimum range value	-32768...32767	Specifies the measurement limits (modifiable in Customized scope only).
Maximum range value		
Filter	0...1000	Specifies the filtering time (0...10 s) in units of 10 ms.
Sampling	100 ms/Channel	Specifies the sampling period of the channel.
Measurement temperature unit	–	Indicates the temperature unit.
Activation Threshold	100...3100	Specifies the thresholds (modifiable in Threshold scope only).
Reactivation Threshold		

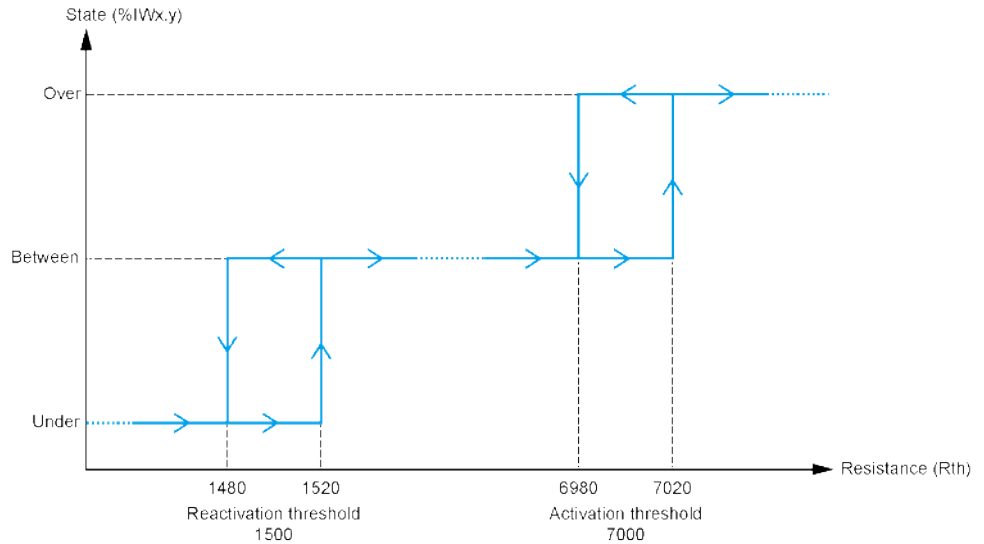
This table describes the read value according to the resistance:

Resistance Value	Read Value
Under the Reactivation Threshold	1
Between thresholds	2
Over the Activation Threshold	4

This figure represents the threshold operation:



This figure represents an example hysteresis curve:



Ohmmeter Type

This figure represents the analog input assistant for the **Ohmmeter** configuration:

%IW1.4 Configuration ✖

Configuration

Type: Scope: Measurement temperature unit:

Minimum range value: Filter:

Maximum range value: Sampling:

You can define the following parameters:

Parameter	Value	Description
Scope	Resistance (Ohm)	Choose the parameter scope for the channel.
Minimum range value	100	Specifies the low measurement limit.
Maximum range value	32000	Specifies the high measurement limit.
Filter	0...1000	Specifies the filtering time (0...10 s) in units of 10 ms.
Sampling	100 ms/Channel	Specifies the sampling period of the channel.

TM3 Analog Output Modules

TM3AQ2 / TM3AQ2G

Introduction

The TM3AQ2 (screw terminal block) / TM3AQ2G (spring terminal block) expansion modules feature 2 analog output channels with 12-bit resolution.

The channel output types are:

- 0...10 V
- -10...+10 V
- 0...20 mA
- 4...20 mA

For further hardware information, refer to TM3AQ2 / TM3AQ2G (see Modicon TM3, Analog I/O Modules, Hardware Guide).

NOTE: If you have physically wired the analog channel for a voltage signal and you configure the channel for a current signal in EcoStruxure Machine Expert - Basic, you may damage the analog circuit.

NOTICE

INOPERABLE EQUIPMENT

Verify that the physical wiring of the analog circuit is compatible with the software configuration for the analog channel.

Failure to follow these instructions can result in equipment damage.

Configuring the Module

For each output, you can define:

Parameter	Value	Default Value	Description
Used	True/False	False	Indicates whether the address is being used in a program.
Address	%QWx . 0...%QWx . 1	%QWx . y	Shows the address of the output channel, where x is the module number and y is the channel number.
Type	Not used 0 - 10 V -10 - +10 V 0 - 20 mA 4 - 20 mA	Not used	Choose the mode of the channel.
Scope	Normal	Normal	The range of values for a channel.
Min.	0 - 10 V	-32768...32767 ⁽¹⁾	Specifies the lower measurement limit.
	-10 - +10 V	0	
	0 - 20 mA	-10000	
	4 - 20 mA	0	
Max.	0 - 10 V	-32768...32767 ⁽¹⁾	Specifies the upper measurement limit.
	-10 - +10 V	10000	
	0 - 20 mA	10000	
	4 - 20 mA	20000	
Fallback value	Min...Max.	If Min. value ≤ 0: default value = 0 If Min. value > 0: default value = Min. value	Specifies the fallback value of the output channel.
⁽¹⁾ The 12-bit data (0 to 4095) processed in the analog I/O module can be linear-converted to a value between -32768 and 32767.			

Programming tab: Displaying Configuration Details in the Programming Tab, page 33 describes how to view and update programming-related properties of these modules.

TM3AQ4 / TM3AQ4G

Introduction

The TM3AQ4 (screw terminal block) / TM3AQ4G (spring terminal block) expansion modules feature 4 analog output channels with 12-bit resolution.

The channel output types are:

- 0...10 V
- -10...+10 V
- 0...20 mA
- 4...20 mA

For further hardware information, refer to TM3AQ4 / TM3AQ4G (see Modicon TM3, Analog I/O Modules, Hardware Guide).

NOTE: If you have physically wired the analog channel for a voltage signal and you configure the channel for a current signal in EcoStruxure Machine Expert - Basic, you may damage the analog circuit.

NOTICE
<p>INOPERABLE EQUIPMENT</p> <p>Verify that the physical wiring of the analog circuit is compatible with the software configuration for the analog channel.</p> <p>Failure to follow these instructions can result in equipment damage.</p>

Configuring the Module

For each output, you can define:

Parameter	Value	Default Value	Description
Used	True/False	False	Indicates whether the address is being used in a program.
Address	%QWx . 0...%QWx . 3	%QWx . y	Shows the address of the output channel, where x is the module number and y is the channel number.
Type	<p>Not used</p> <p>0 - 10 V</p> <p>-10 - +10 V</p> <p>0 - 20 mA</p> <p>4 - 20 mA</p>	Not used	Choose the mode of the channel.
Scope	Normal	Normal	The range of values for a channel.
Min.	0 - 10 V	-32768...32767 ⁽¹⁾	Specifies the lower measurement limit.
	-10 - +10 V	-10000	
	0 - 20 mA	0	
	4 - 20 mA	4000	
Max.	0 - 10 V	-32768...32767 ⁽¹⁾	Specifies the upper measurement limit.
	-10 - +10 V	10000	
	0 - 20 mA	20000	
	4 - 20 mA	20000	
Fallback value	Min....Max.	<p>If Min. value ≤ 0: default value = 0</p> <p>If Min. value > 0: default value = Min. value</p>	Specifies the fallback value of the output channel.
<p>⁽¹⁾ The 12-bit data (0 to 4095) processed in the analog I/O module can be linear-converted to a value between -32768 and 32767.</p>			

Programming tab: Displaying Configuration Details in the Programming Tab, page 33 describes how to view and update programming-related properties of these modules.

TM3 Analog Mixed Input/Output Modules

TM3AM6 / TM3AM6G

Introduction

The TM3AM6 (screw terminal block) / TM3AM6G (spring terminal block) expansion modules feature 4 analog input channels and 2 analog output channels with 12-bit resolution.

The channel input types are:

- 0...10 V
- -10...+10 V
- 0...20 mA
- 4...20 mA

For information on the diagnostic codes produced by each input type, refer to *Analog I/O Modules Diagnostics*, page 65.

The channel output types are:

- 0...10 V
- -10...+10 V
- 0...20 mA
- 4...20 mA

For further hardware information, refer to *TM3AM6 / TM3AM6G* (see *Modicon TM3, Analog I/O Modules, Hardware Guide*).

NOTE: If you have physically wired the analog channel for a voltage signal and you configure the channel for a current signal in EcoStruxure Machine Expert - Basic, you may damage the analog circuit.

NOTICE

INOPERABLE EQUIPMENT

Verify that the physical wiring of the analog circuit is compatible with the software configuration for the analog channel.

Failure to follow these instructions can result in equipment damage.

Configuring the Module

For each input, you can define:

Parameter	Value	Default Value	Description	
Used	True/False	False	Indicates whether the address is being used in a program.	
Address	%IWx.0...%IWx.3	%IWx.y	The address of the input channel, where x is the module number and y is the channel number.	
Type	Not used 0 - 10 V -10 - +10 V 0 - 20 mA 4 - 20 mA	Not used	Choose the mode of the channel.	
Scope	Normal	Normal	The range of values for a channel.	
Min.	0 - 10 V	-32768...32767 ⁽¹⁾	Specifies the lower measurement limit.	
	-10 - +10 V			-10000
	0 - 20 mA			0
	4 - 20 mA			4000
Max.	0 - 10 V	-32768...32767 ⁽¹⁾	Specifies the upper measurement limit.	
	-10 - +10 V			10000
	0 - 20 mA			20000
	4 - 20 mA			20000
Filter (x 10ms)	0...1000	0	Specifies the first order filter time constant (0...10 s) in increments of 10 ms, page 35.	
Sampling	1ms/Channel 10ms/Channel	1ms/Channel	Specifies the sampling period of the channel. If an input filter is active, the sampling period is set internally to 10 ms, page 35.	
⁽¹⁾ The 12-bit data (0 to 4095) processed in the analog I/O module can be linear-converted to a value between -32768 and 32767.				

For each output, you can define:

Parameter	Value	Default Value	Description	
Used	True/False	False	Indicates whether the address is being used in a program.	
Address	%QWx . 0...%QWx . 1	%QWx . y	Shows the address of the output channel, where x is the module number and y is the channel number.	
Type	Not used 0 - 10 V -10 - +10 V 0 - 20 mA 4 - 20 mA	Not used	Choose the mode of the channel.	
Scope	Normal	Normal	The range of values for a channel.	
Min.	0 - 10 V	-32768...32767 ⁽¹⁾	0	Specifies the lower measurement limit.
	-10 - +10 V		-10000	
	0 - 20 mA		0	
	4 - 20 mA		4000	
Max.	0 - 10 V	-32768...32767 ⁽¹⁾	10000	Specifies the upper measurement limit.
	-10 - +10 V		10000	
	0 - 20 mA		20000	
	4 - 20 mA		20000	
Fallback value	Min....Max.	If Min. value ≤ 0: default value = 0 If Min. value > 0: default value = Min. value	Specifies the fallback value of the output channel.	
⁽¹⁾ The 12-bit data (0 to 4095) processed in the analog I/O module can be linear-converted to a value between -32768 and 32767.				

Programming tab: Displaying Configuration Details in the Programming Tab, page 33 describes how to view and update programming-related properties of these modules.

TM3TM3 / TM3TM3G

Introduction

The TM3TM3 (screw terminal block) / TM3TM3G (spring terminal block) expansion modules feature 2 analog input channels with 16-bit resolution and 1 analog output with 12-bit resolution.

The channel input types are:

- 0...10 V
- -10...+10 V
- 0...20 mA
- 4...20 mA
- K thermocouple
- J thermocouple
- R thermocouple
- S thermocouple
- B thermocouple
- E thermocouple
- T thermocouple
- N thermocouple
- C thermocouple
- PT100
- PT1000
- NI100
- NI1000

For information on the diagnostic codes produced by each input type, refer to *Analog I/O Modules Diagnostics*, page 65.

The channel output types are:

- 0...10 V
- -10...+10 V
- 0...20 mA
- 4...20 mA

For further hardware information, refer to *TM3TM3 / TM3TM3G* (see *Modicon TM3, Analog I/O Modules, Hardware Guide*).

NOTE: If you have physically wired the analog channel for a voltage signal and you configure the channel for a current signal in EcoStruxure Machine Expert - Basic, you may damage the analog circuit.

NOTICE

INOPERABLE EQUIPMENT

Verify that the physical wiring of the analog circuit is compatible with the software configuration for the analog channel.

Failure to follow these instructions can result in equipment damage.

Configuring the Module

For each input, you can define:

Parameter	Value	Default Value	Description	
Used	True/False	False	Indicates whether the address is being used in a program.	
Address	%IWx.0...%IWx.1	%IWx.y	The address of the input channel, where x is the module number and y is the channel number.	
Type	Not used 0 - 10 V -10 - +10 V 0 - 20 mA 4 - 20 mA K Thermocouple J Thermocouple R Thermocouple S Thermocouple B Thermocouple E Thermocouple T Thermocouple N Thermocouple C Thermocouple PT100 PT1000 NI100 NI1000	Not used	Choose the mode of the channel.	
Scope	Normal Celsius (0.1°C) Fahrenheit (0.1°F) Fahrenheit (0.2°F)*	Normal	The range of values for a channel. * Only for B and C thermocouples.	
Min.	0 - 10 V	-32768...32767	0	Specifies the lower measurement limit.
	-10 - +10 V		-10000	
	0 - 20 mA		0	
	4 - 20 mA		4000	
	Temperature		See the table below	
Max.	0 - 10 V	-32768...32767	10000	Specifies the upper measurement limit.
	-10 - +10 V		10000	
	0 - 20 mA		20000	
	4 - 20 mA		20000	
	Temperature		See the table below	
Filter (x 10ms)	0...1000	0	Specifies the first order filter time constant (0...10 s) in increments of 10 ms, page 35.	

Parameter	Value	Default Value	Description
Sampling	10ms/Channel 100ms/Channel	100ms/Channel	Specifies the sampling period of the channel. If an input filter is active, the sampling period is set internally to 10 ms, page 35.
Units	- 0.1 °C 0.1 °F 0.2 °F	-	Indicates the temperature unit.

Type	Normal		Celsius (0.1 °C)		Fahrenheit		
	Minimum	Maximum	Minimum	Maximum	Minimum	Maximum	Unit
K Thermocouple	-32768	32767	-2000	13000	-3280	23720	0.1 °F
J Thermocouple	-32768	32767	-2000	10000	-3280	18320	0.1 °F
R Thermocouple	-32768	32767	0	17600	320	32000	0.1 °F
S Thermocouple	-32768	32767	0	17600	320	32000	0.1 °F
B Thermocouple	-32768	32767	0	18200	160	16540	0.2 °F
E Thermocouple	-32768	32767	-2000	8000	-3280	14720	0.1 °F
T Thermocouple	-32768	32767	-2000	4000	-3280	7520	0.1 °F
N Thermocouple	-32768	32767	-2000	13000	-3280	23720	0.1 °F
C Thermocouple	-32768	32767	0	23150	160	20995	0.2 °F
PT100	-32768	32767	-2000	8500	-3280	15620	0.1 °F
PT1000	-32768	32767	-2000	6000	-3280	11120	0.1 °F
NI100	-32768	32767	-600	1800	-760	3560	0.1 °F
NI1000	-32768	32767	-600	1800	-760	3560	0.1 °F

For the output, you can define:

Parameter	Value	Default Value	Description	
Used	True/False	False	Indicates whether the address is being used in a program.	
Address	%QWx.0	%QWx.0	Shows the address of the output channel, where x is the module number.	
Type	Not used 0 - 10 V -10 - +10 V 0 - 20 mA 4 - 20 mA	Not used	Choose the mode of the channel.	
Scope	Normal	Normal	The range of values for a channel.	
Min.	0 - 10 V	-32768...32767 ⁽¹⁾	0	Specifies the lower measurement limit.
	-10 - +10 V		-10000	
	0 - 20 mA		0	
	4 - 20 mA		4000	
Max.	0 - 10 V	-32768...32767 ⁽¹⁾	10000	Specifies the upper measurement limit.
	-10 - +10 V		10000	
	0 - 20 mA		20000	
	4 - 20 mA		20000	
Fallback value	Min....Max.	If Min. value ≤ 0: default value = 0 If Min. value > 0: default value = Min. value	Specifies the fallback value of the output channel.	

⁽¹⁾ The 12-bit data (0 to 4095) processed in the analog I/O module can be linear-converted to a value between -32768 and 32767.

Programming tab: Displaying Configuration Details in the Programming Tab, page 33 describes how to view and update programming-related properties of these modules.

Analog I/O Modules Diagnostics

Introduction

The operating status of each I/O channel is given by the objects:

- %IWSx.y for input channel *y* of module *x*
- %QWSx.y for output channel *y* of module *x*

Input Channel Status Byte Description

This table describes the %IWS input channel status bytes:

Byte value	Description
0	Normal
1	Undefined
2	Undefined
3	Configuration error detected.
4	External power supply error detected.
5	Wiring error detected (input voltage/current high limit exceeded).
6	Wiring error detected (input voltage/current low limit exceeded).
7	Hardware error detected.
8	The measured value is in the High extended zone.
9	The measured value is in the Low extended zone.
10...255	Undefined

Output Channel Status Byte Description

This table describes the %QWS output channel status byte:

Byte value	Description
0	Normal
1	Undefined
2	Undefined
3	Configuration error detected
4	External power supply voltage limits exceeded
5	Undefined
6	Undefined
7	Hardware error detected
8...255	Undefined

Status Byte Values Produced By Channel Input Types

The following tables shows the Input Channel Status Byte, page 65 values generated by different channel input types of the TM3 Analog expansion modules.

0...10 V channel input type:

Input voltage	Status Code Generated
≤ -0.20 V	6
-0.19 V...10.19 V	0
≥ 10.20 V	5

-10...+10 V input channel type:

Input voltage	Status Code Generated
≤ -10.40 V	6
-10.39 V...10.39 V	0
≥ 10.40 V	5

0...20 mA input channel type:

Input voltage	Status Code Generated
≤ -0.40 mA	6
-0.39 mA...20.39 mA	0
≥ 20.40 mA	5

4...20 mA input channel type:

Input voltage	Status Code Generated
≤ 3.68 mA	6
3.69 mA...20.31 mA	0
≥ 20.32 mA	5

0...20 mA extended mode of the TM3AI8 / TM3AI8G expansion modules:

Input voltage	Status Code Generated
≤ -0.40 mA	6
-0.39 mA...20.00 mA	0
20.01 mA...23.54 mA	8
≥ 23.55 mA	5

4...20 mA extended mode of the TM3AI8 / TM3AI8G expansion modules:

Input voltage	Status Code Generated
< 1.19 mA	6
1.20 mA...3.99 mA	9
4.00 mA...20.00 mA	0
20.01 mA...23.17 mA	8
≥ 23.18 mA	5

TM3 Expert I/O Modules Configuration

Introduction

This chapter describes how to configure the TM3 expert I/O modules, page 21.

Configuring the TM3XTYS4 Expert Module

Introduction

This chapter describes how to configure the TM3 expert I/O modules, page 21.

Configuring the Module

Configuration of the TM3XTYS4 module is carried out through the **I/O Mapping** tab of the module.

In the **Devices tree**, double-click the **Module_n** subnode of the module, where *n* is the unique identifier of the module. The **I/O Mapping** tab appears.

The digital inputs of this module are:

Channel	Address	Description
CH1_Ready	%Ix.0	Input active if the selector of TeSys is in the ON position.
CH1_Run	%Ix.1	Input active if the power contacts of TeSys are closed.
CH1_Trip	%Ix.2	Input active if the selector of TeSys is in the TRIP position.
CH2_Ready	%Ix.3	Input active if the selector of TeSys is in the ON position.
CH2_Run	%Ix.4	Input active if the power contacts of TeSys are closed.
CH2_Trip	%Ix.5	Input active if the selector of TeSys is in the TRIP position.
CH3_Ready	%Ix.6	Active if the selector of TeSys is in the ON position.
CH3_Run	%Ix.7	Input active if the power contacts of TeSys are closed.
CH3_Trip	%Ix.8	Input active if the selector of TeSys is in the TRIP position.
CH4_Ready	%Ix.9	Input active if the selector of TeSys is in the ON position.
CH4_Run	%Ix.10	Input active if the power contacts of TeSys are closed.
CH4_Trip	%Ix.11	Input active if the selector of TeSys is in the TRIP position.
Error	%Ix.12	Overcurrent error flag of protected source outputs (0:Error, 1:Normal).

The digital outputs of this module are:

Tesys	Address	Description
CH1_Dir1Control	%Qx.0	This 24 V output drives the direct (forward) command of the motor.
CH1_Dir2Control	%Qx.1	This 24 V output drives the reverse (backward) command of the motor.
CH2_Dir1Control	%Qx.2	This 24 V output drives the direct (forward) command of the motor.
CH2_Dir2Control	%Qx.3	This 24 V output drives the reverse (backward) command of the motor.
CH3_Dir1Control	%Qx.4	This 24 V output drives the direct (forward) command of the motor.
CH3_Dir2Control	%Qx.5	This 24 V output drives the reverse (backward) command of the motor.
CH4_Dir1Control	%Qx.6	This 24 V output drives the direct (forward) command of the motor.
CH4_Dir2Control	%Qx.7	This 24 V output drives the reverse (backward) command of the motor.

Configuring the Modules

Configuration tab: Displaying Configuration Details in the Configuration Tab, page 30 describes how to view the configuration of these modules.

Programming tab: Displaying Configuration Details in the Programming Tab, page 33 describes how to view and update programming-related properties of these modules.

TM3 Safety Modules Configuration

Introduction

This chapter describes how to configure the TM3 Safety Modules, page 22.

Configuring the TM3 Safety Modules

Introduction

For more information on the terms methods used concerning functional safety as they apply to the TM3 Safety Modules, refer to the TM3 Safety Modules Hardware Guide (see Modicon TM3, Safety Modules, Hardware Guide).

Configuring the Modules

Configuration tab: Displaying Configuration Details in the Configuration Tab, page 30 describes how to view the configuration of these modules.

Programming tab: Displaying Configuration Details in the Programming Tab, page 33 describes how to view and update programming-related properties of these modules.

General Principles: TM3 Safety Functionality Modes

Interlock

Description

In 2 channel operation, both inputs related to both channels must be seen open before a safety cycle can be started and the output can be closed. This functionality ensures that the output circuit cannot be activated if one of the input channels is not able to be open (for example in case of contact malfunction or short circuit).

The interlock function verifies that both **K1** and **K2** relays are open before the safety cycle. In case of short power-supply interruption, one of the relays may be off while the other remains on. To allow the operation of the module on power return, the power-supply interruption should be at least 100 ms in duration. If not, the module may detect that it is in an error condition and not allow the safety cycle to start. For more information, see the TM3 Safety Module - Hardware Guide.

Power Cycle

The interlock condition is reset by a power cycle. Information about a possible malfunction detected, provided by the interlock, is interrupted and not recovered before the next safety cycle.

Reset

The logic controller can request to reset the safety module by communicating with the safety module on the TM3 Bus.

When the reset signal is active, both safety module internal relays are deactivated.

The reset signal can be used to reset the module after the activation of the interlock function.

NOTE: The reset signal overwrites an activated interlock function. Information about a possible malfunction detected, provided by the interlock, is interrupted and not recovered before the next safety cycle.

The interruption of the interlock function could lead to the degradation of the safety level of the system. The reset of this function should only be done manually after verification of the intended functionality.

⚠ WARNING

UNINTENDED EQUIPMENT OPERATION

- Do not use the reset function to reset an interlock programmatically.
- Always verify the interlock notification before using the reset function.

Failure to follow these instructions can result in death, serious injury, or equipment damage.

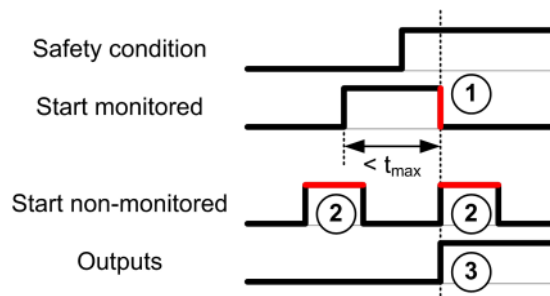
Start

Description

Two modes are available for the start functionality:

Non-monitored start:	When non-monitored, the start mode can be: <ul style="list-style-type: none"> • Manually controlled (conditioned by the input state) • Automatic (hardwired)
Monitored start:	When monitored, the start mode is manually controlled (conditioned by the input edge).

This figure represents the events sequence for the two start modes available:



Events description:

1. Monitored start condition is triggered by a falling edge on the **start** input.
2. Non-monitored start condition is available as long as the **start** input is on. The start condition can be valid before the safety-related input.
3. The outputs get activated only if both start and safety-related input conditions are valid.

NOTE: For a monitored start, the falling edge on the **start** input must appear within 20 seconds (± 5 seconds) after activation of the start input at nominal supply voltage.

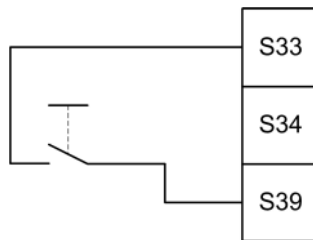
Both the safety-related conditions and the start conditions must be valid before allowing the activation of outputs.

▲ WARNING
<p>UNINTENDED EQUIPMENT OPERATION</p> <p>Do not use either the monitored start or the non-monitored start as a safety-related function.</p> <p>Failure to follow these instructions can result in death, serious injury, or equipment damage.</p>

Manual Non-Monitored Start

The start condition is valid when the **start** input is closed (start switch is pressed).

This figure represents how to connect a switch on a TM3 safety module to configure a manual non-monitored start:



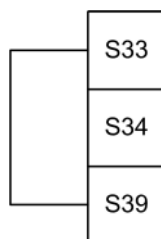
Automatic Start

There is no start interlock when automatic start is used. After a power cycle, the output behavior depends solely on the state of the inputs.

▲ WARNING
<p>UNINTENDED EQUIPMENT OPERATION</p> <p>Do not use automatic start if a start interlock is required in your application after a power cycle.</p> <p>Failure to follow these instructions can result in death, serious injury, or equipment damage.</p>

The module is in automatic start mode if the **start** input is permanently closed (hardwired).

This figure represents how to connect a switch on a TM3 safety module to configure an automatic start:



NOTE: There is no start interlock in automatic start after a power cycle.

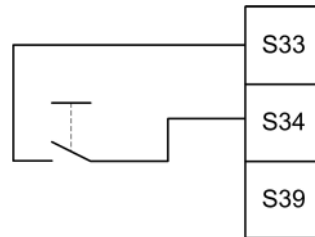
Monitored Start

In monitored start mode, the outputs are activated when:

- All required inputs are closed.
- A falling edge is applied to the **start** input. A falling edge means that the start switch is pressed and released again.

At nominal supply voltage, the start switch must be released within 20 seconds (\pm 5 seconds) after it has been closed. The exact delay depends on supply voltage and ambient temperature.

This figure represents how to connect a switch on a TM3 safety module to configure a monitored start (when available on the module):



External Device Monitoring (EDM)

Description

External device monitoring functionality is used to ensure that external contactors controlled by the safety module outputs are able to interrupt the safety-related circuit. This functionality is implemented by adding the external contactor feedback to the start condition of the safety module.

The external contactor must provide a feedback through a normally closed auxiliary contact forcibly guided by its normally open safety-related contact. The start condition is valid only when the external feedback (normally closed) is closed.

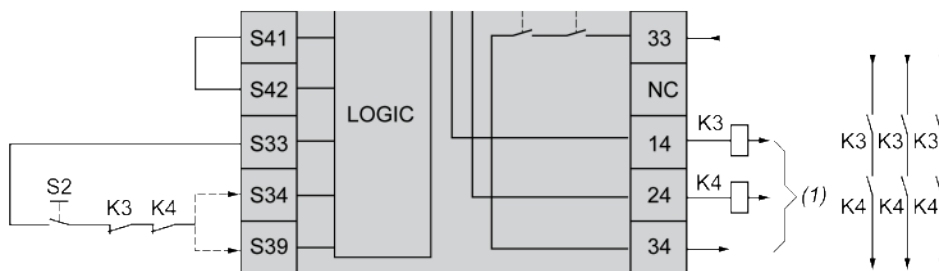
External device monitoring can be performed on:

- 1 channel.
External feedback is provided to the start condition.
- 2 channels for short circuit detection.
External feedback is provided to the start condition and to the **S4** input.

NOTE: The state of the external device is only monitored when the safety module is analyzing the start condition validity. When outputs are activated, the external device is not monitored.

EDM Configuration With One Channel

This figure shows an example of 1 channel EDM with the external feedback (**K3** and **K4**) added to the start condition, and **S41** directly connected to **S42**:



K3 External contactor with a normally closed feedback and normally open safety-related contact

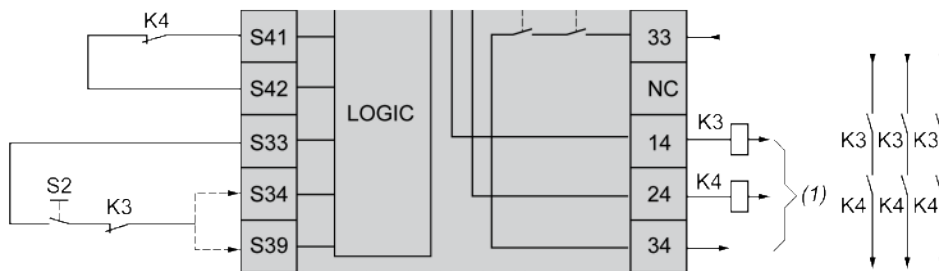
K4 External contactor with a normally closed feedback and normally open safety-related contact

S2 Start switch

(1) Safety-related outputs

EDM Configuration With Two Channels

This figure shows an example of 2 channels EDM with one external feedback added to the start condition (**K3**), and the other feedback (**K4**) connected to **S41** and **S42**:



K3 External contactor with a normally closed feedback and normally open safety-related contact

K4 External contactor with a normally closed feedback and normally open safety-related contact

S2 Start switch

(1) Safety-related outputs

Synchronization Time Monitoring for TM3SAK6R / TM3SAK6RG

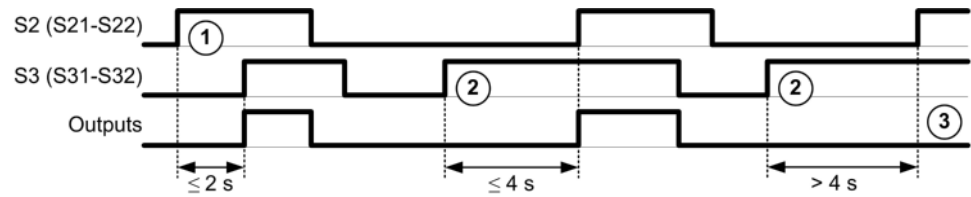
Description

The synchronization time monitoring is relevant for 2-channel applications. It monitors both inputs to determine that they are activated simultaneously (within a defined time). The synchronization time monitoring allows to detect a contact error (short-circuit) before the activation of the other input.

When the synchronization time monitoring is enabled, the outputs are allowed to be activated if both input S21-S22 and input S31-S32 are activated within 2 or 4 seconds. The defined time depends on which input is activated first as explained

in the following figure. The outputs are not activated if the synchronization time is expired.

This figure represents the synchronization time monitoring chronogram on a TM3SAK6R• module in a 2-channel application:



Events description:

1. **S21-S22** operated before **S31-S32**
2. **S31-S32** operated before **S21-S22**
3. Outputs are not activated because the synchronization time has expired.

Synchronization Time Monitoring Control

The synchronization time monitoring is enabled or disabled by the logic controller through a communication with the safety module on the TM3 Bus.

The synchronization time monitoring is an additional feature that contributes to the safety-related system, but cannot itself provide for functional safety.

⚠ WARNING

INCORRECT USE OF THE INTERNAL SYNCHRONIZATION TIME CONDITION

Do not use the synchronization time monitoring to control safety-related operations.

Failure to follow these instructions can result in death, serious injury, or equipment damage.

When enabled, the synchronization time is monitored internally by the module.

In a 2-channel application, **S21-S22** and **S31-S32** simultaneous activation is monitored if `SyncOn` bit is set to 1.

General Principles: TM3 Safety Operation Modes

Power-On Condition

Description

When applying power to the safety module, the outputs are activated only if these four conditions are fulfilled:

- The start condition, page 70 is valid.
- The safety-related conditions (safety-related inputs) indicate to activate the safety-related outputs.
- The internal enable, page 75 condition is valid.

▲ WARNING
<p>UNINTENDED EQUIPMENT OPERATION</p> <p>Do not use automatic start if a start interlock is required in your application after a power cycle.</p> <p>Failure to follow these instructions can result in death, serious injury, or equipment damage.</p>

Enable Condition

Description

The enable condition is a module internal control required to allow the internal relay **K2** to be closed. The internal relays can only be closed if the following conditions are fulfilled:

- The start condition, page 70 is valid.
- The safety-related conditions (safety-related inputs) indicate to authorize activation of the safety-related outputs.
- The internal enable condition is valid for **K2**.

The safety-related outputs are deactivated:

- if the enable condition is not valid, or
- if the safety-related conditions are no longer valid.

Enable Condition

The enable condition is set by the controller through a communication with the safety module on the TM3 Bus.

▲ WARNING
<p>INCORRECT USE OF THE INTERNAL ENABLE CONDITION</p> <p>Do not use the internal enable condition to control safety-related operations.</p> <p>Failure to follow these instructions can result in death, serious injury, or equipment damage.</p>

The enable condition is enabled by the system logic controller through a communication on the TM3 Bus.

The enable condition is disabled by:

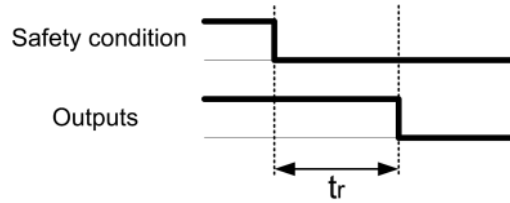
- The logic controller through a communication on the TM3 Bus.
- The module when:
 - The synchronization time, page 73 is enabled and a time-out occurs.
 - The TM3 Bus time-out occurs.

NOTE: The enable condition only affects to internal relay **K2**. Internal relay **K1** may be active even when the enable condition is not valid.

Output Response Time

Description

This figure represents the response time (t_r) between the opening of one input (safety-related condition invalid) and the safety-related outputs deactivation:



NOTE: $t_r \leq 20$ ms

On Delay and Restart Delay

On Delay Description

On delay represents the time elapsed between the enabling of the condition for activation and the activation of the safety-related outputs.

NOTE: On delay ≤ 100 ms

Restart Delay Description

Restart delay represents the time required to reactivate internal relays after their deactivation.

NOTE: Restart delay ≤ 300 ms

TM3 Safety Modules I/O Mapping

Overview

The diagnostic is not safety-related and provides information on:

- Power supply voltage (in or out voltage tolerance)
- TM3 Bus communication status
- Relays state (energized or not)
- Inputs state (open or closed)

Diagnostic information is provided by using:

- TM3 Bus communication status
- Safety modules LED

TM3SAC5R / TM3SAC5RG Diagnostic Inputs

⚠ WARNING

UNINTENDED EQUIPMENT OPERATION

Do not use the data transferred over the TM3 Bus for any functional safety-related task(s).

Failure to follow these instructions can result in death, serious injury, or equipment damage.

This table describes the diagnostic data transferred by the TM3SAC5R• module on the TM3 Bus:

Bit	Description
%Ix.0	Safety-related outputs active (on)
%Ix.1	Power supply available
%Ix.2	Power supply out of voltage tolerance
%Ix.3	Not applicable
%Ix.4	Not applicable
%Ix.5	Start active
%Ix.6	Relay K1 activated
%Ix.7	Relay K2 activated
%Ix.8	Reserved
%Ix.9	Reserved
%Ix.10	Reserved
%Ix.11	Reserved
%Ix.12	Waiting for start condition, page 70
%Ix.13	Not applicable
%Ix.14	Reserved
%Ix.15	Reserved

TM3SAC5R / TM3SAC5RG Outputs

This table describes the outputs transferred on the TM3 Bus to the TM3 safety modules:

Bit	Description
%Qx.0	<i>TRUE</i> enables the activation of safety-related outputs.
%Qx.1	<i>TRUE</i> resets the module: current source switched off, safety-related outputs deactivated, and interlock reset.
%Qx.2	<i>TRUE</i> defines that the safety-related function remains active even when a TM3 Bus time-out occurs.

TM3SAF5R / TM3SAF5RG Diagnostic Inputs

⚠ WARNING

UNINTENDED EQUIPMENT OPERATION

Do not use the data transferred over the TM3 Bus for any functional safety-related task(s).

Failure to follow these instructions can result in death, serious injury, or equipment damage.

This table describes the diagnostic data transferred by the TM3SAF5R• module on the TM3 Bus:

Bit	Description
%Ix.0	Safety-related outputs active (on)
%Ix.1	Power supply available
%Ix.2	Power supply out of voltage tolerance
%Ix.3	Channel 1 active
%Ix.4	Channel 2 active
%Ix.5	Start active
%Ix.6	Relay K1 activated
%Ix.7	Relay K2 activated
%Ix.8	Reserved
%Ix.9	S11-S12 input active
%Ix.10	S21-S22 input active
%Ix.11	S31-S32 input active
%Ix.12	Waiting for start condition, page 70
%Ix.13	Not applicable
%Ix.14	Reserved
%Ix.15	Reserved

TM3SAF5R / TM3SAF5RG Outputs

This table describes the outputs transferred on the TM3 Bus to the TM3 safety modules:

Bit	Description
%Qx.0	<i>TRUE</i> enables the activation of safety-related outputs.
%Qx.1	<i>TRUE</i> resets the module: current source switched off, safety-related outputs deactivated, and interlock reset.
%Qx.2	<i>TRUE</i> defines that the safety-related function remains active even when a TM3 Bus time-out occurs.

TM3SAFL5R / TM3SAFL5RG Diagnostic Inputs

⚠ WARNING
UNINTENDED EQUIPMENT OPERATION
Do not use the data transferred over the TM3 Bus for any functional safety-related task(s).
Failure to follow these instructions can result in death, serious injury, or equipment damage.

This table describes the diagnostic data transferred by the TM3SAFL5R• module on the TM3 Bus:

Bit	Description
%Ix.0	Safety-related outputs active (on)
%Ix.1	Power supply available
%Ix.2	Power supply out of voltage tolerance
%Ix.3	Channel 1 active
%Ix.4	Channel 2 active
%Ix.5	Start active
%Ix.6	Relay K1 activated
%Ix.7	Relay K2 activated
%Ix.8	S11-S12 input active
%Ix.9	Reserved
%Ix.10	S21-S22 input active
%Ix.11	S31-S32 input active
%Ix.12	Waiting for start condition, page 70
%Ix.13	Not applicable
%Ix.14	Reserved
%Ix.15	Reserved

TM3SAFL5R / TM3SAFL5RG Outputs

This table describes the outputs transferred on the TM3 Bus to the TM3 safety modules:

Bit	Description
%Qx.0	<i>TRUE</i> enables the activation of safety-related outputs.
%Qx.1	<i>TRUE</i> resets the module: current source switched off, safety-related outputs deactivated, and interlock reset.
%Qx.2	<i>TRUE</i> defines that the safety-related function remains active even when a TM3 Bus time-out occurs.

TM3SAK6R / TM3SAK6RG Diagnostic Inputs

⚠ WARNING

UNINTENDED EQUIPMENT OPERATION

Do not use the data transferred over the TM3 Bus for any functional safety-related task(s).

Failure to follow these instructions can result in death, serious injury, or equipment damage.

This table describes the diagnostic data transferred by each TM3SAK6R• module on the TM3 Bus:

Bit	Description
%Ix.0	Safety-related outputs active (on)
%Ix.1	Power supply available
%Ix.2	Power supply out of voltage tolerance
%Ix.3	Channel 1 active
%Ix.4	Channel 2 active
%Ix.5	Start active
%Ix.6	Relay K1 activated
%Ix.7	Relay K2 activated
%Ix.8	S11-S12 input active
%Ix.9	S21-S22 input active
%Ix.10	S31-S32 input active
%Ix.11	S41-S42 input active
%Ix.12	Waiting for start condition, page 70
%Ix.13	Synchronization time expired, page 73
%Ix.14	Reserved
%Ix.15	Reserved

TM3SAK6R / TM3SAK6RG Outputs

This table describes the outputs transferred on the TM3 Bus to the TM3 safety modules:

Bit	Description
%Qx.0	<i>TRUE</i> enables the activation of safety-related outputs.
%Qx.1	<i>TRUE</i> resets the module: current source switched off, safety-related outputs deactivated, and interlock reset.
%Qx.2	<i>TRUE</i> defines that the safety-related function remains active even when a TM3 Bus time-out occurs.
%Qx.3	<i>TRUE</i> enables the synchronization time monitoring of S21-S22 and S31-S32 inputs.

TM3 Transmitter and Receiver I/O Modules Configuration

Introduction

This chapter describes how to configure the TM3 transmitter and receiver I/O modules, page 21.

Configuring the TM3 Transmitter and Receiver I/O Modules

Introduction

The TM3XTRA1 transmitter module is equipped with:

- 1 RJ-45 connector
- 1 functional ground screw
- 2 status LEDs (link and power)

The TM3XREC1 receiver module is equipped with:

- 1 RJ-45 connector
- 2 status LEDs (link and power)
- Removable 24 Vdc power supply

The transmitter expansion module is connected to the logic controller through the TM3 bus. The transmitter must be the last physical module directly connected to the logic controller.

The receiver module is connected to the transmitter module using a specific cable (VDIP1845460**).

Additional TM3 modules can then be connected to the receiver module through the extended TM3 bus.

NOTE: You cannot use TM2 expansion modules in configurations that include the TM3 transmitter/receiver modules.

Configuring the Modules

The TM3XTRA1 and TM3XREC1 expansion modules have no configurable properties in EcoStruxure Machine Expert - Basic.

Behavior of the TM3 Transmitter and Receiver Modules

Overview

The following exceptional behaviors can occur with TM3 transmitter and receiver modules:

- Transmitter/receiver cable disconnected or broken during operation
- Removing receiver module power during operation
- Receiver module disconnected during startup
- Receiver module powered on after the controller

The TM3 modules before the transmitter module are called "local", and those after the receiver module are called "remote".

The I/O that may be embedded in your controller is independent of the I/O that you may have added in the form of I/O expansion. It is important that the logical I/O configuration within your program matches the physical I/O configuration of your installation. If you add or remove any physical I/O to or from the I/O expansion bus or, depending on the controller reference, to or from the controller (in the form of cartridges), then you must update your application configuration. This is also true for any field bus devices you may have in your installation. Otherwise, there is the potential that the expansion bus or field bus no longer function while the embedded I/O that may be present in your controller continues to operate.

▲ WARNING

UNINTENDED EQUIPMENT OPERATION

Update the configuration of your program each time you add or delete any type of I/O expansions on your I/O bus, or you add or delete any devices on your field bus.

Failure to follow these instructions can result in death, serious injury, or equipment damage.

Transmitter/Receiver Cable Disconnected or Broken During Operation

The logic controller continuously retries to access the modules attached to the receiver module.

When the receiver module detects cable disconnection:

- The local and remote digital outputs are set to zero, and the analog outputs no longer present an electrical value.
- ERR LED is flashing, and bit 14 of TM3 status word (%SW118) is set to 0.
- Diagnostic information for the remote modules is available in the system word %SW120.
- In the EcoStruxure Machine Expert - Basic configuration screen, the TM3 modules attached to the receiver module are red.

Reconnecting the cable does not restore normal operation. Only a logic controller power cycle or reset restores normal operation after disconnecting and then reconnecting the cable.

Removing Receiver Module Power During Operation

When power is removed from the receiver module:

- The local and remote digital outputs are set to zero, and the analog outputs no longer present an electrical value.
- ERR LED is flashing, and bit 14 of TM3 status word (%SW118) is set to 0.
- Diagnostic information for the remote modules is available in the system word %SW120.
- In the EcoStruxure Machine Expert - Basic configuration screen, the TM3 modules attached to the receiver module are red.

Restoring power results in the TM3 modules attached to the receiver module maintaining the zero digital value, or maintaining no analog output value. Only a logic controller power cycle or reset restores normal operation.

Receiver Module Powered on After the Controller

If two separate power supplies are used for the receiver module and the controller, the power supply of the receiver module must be switched on before the controller power supply. The TM3 bus does not start if the correct order of power application is not respected, and all modules remain in their original state.

If the receiver module and the logic controller are supplied by the same power supply, the whole configuration starts operating.

If only the receiver module is powered (logic controller not supplied), the TM3 modules after the receiver module remain in their original state.

Firmware Management

Downloading Firmware to TM3 Digital, Analog and Expert Expansion Modules

The firmware can be updated in:

- TM3 analog expansion modules that have a firmware version greater than or equal to 26 (SV \geq 1.4).
- TM3 digital expansion modules and TM3XTYS4 expert expansion modules that have a firmware version greater than or equal to 28 (SV \geq 2.0).

If necessary, the version of firmware can be confirmed using EcoStruxure Machine Expert - Basic.

Firmware updates are performed using a script file on an SD card. When the SD card is inserted in the SD card slot of the M221 Logic Controller, the logic controller updates the firmware of the TM3 expansion modules on the I/O bus, including those that are:

- Connected remotely, using a TM3 Transmitter/Receiver module
- In configurations comprising a mix of TM3 and TM2 expansion modules.

This table describes how to download a firmware to one or more TM3 expansion modules using an SD card:

Step	Action
1	Apply power to the controller.
2	<p>Ensure that the controller is in the <i>EMPTY</i> state by deleting the application in the controller. You can do this with EcoStruxure Machine Expert – Basic by using one of the following script commands:</p> <pre>Delete "/usr/*" Delete "/usr/app"</pre> <p>For details, refer to File Management Operations (see Modicon M221 Logic Controller, Programming Guide).</p>
3	Insert an empty SD card into the PC.
4	Create a file called <i>script.cmd</i> in the SD card root directory.
5	<p>Edit the file and insert the following command:</p> <pre>Download "/TM3/<filename>/*"</pre> <p>NOTE: <filename> is the file name of the firmware you wish to update. The asterisk signifies that all modules will be updated.</p> <p>To download the firmware to one specific TM3 expansion module, replace the asterisk with the position of the expansion module in the configuration. For example, to specify the module at position 4:</p> <pre>Download "/TM3/<filename>/4"</pre>
6	<p>Create the folder path <i>/TM3/</i> in the SD card root directory and copy the firmware file to the <i>TM3</i> folder.</p> <p>NOTE: A firmware file (the firmware file valid at the time of the installation of EcoStruxure Machine Expert – Basic) and an example script are available in the folder <i>Firmwares & PostConfiguration\TM3\</i> of the EcoStruxure Machine Expert – Basic installation folder.</p>
7	<p>Remove the SD card from the PC and insert it into the SD card slot of the controller.</p> <p>Result: The controller begins transferring the firmware file from the SD card to the updatable TM3 expansion modules or to the one module specified in step 5. During this operation, the SD system LED on the controller is illuminated.</p> <p>NOTE: The firmware update takes 10 to 15 seconds for each expansion module being updated. Do not remove power from the controller, or remove the SD card, while the operation is in progress. Otherwise, the firmware update may be unsuccessful and the modules may no longer function correctly. In this case, run the <i>Recovery Procedure</i>, page 86 to reinitialize the firmware on the modules.</p>
8	<p>Wait until the end of the operation (until the SD LED is off or flashing).</p> <p>If an error is detected, the SD and ERR LEDs flash and the detected error is logged in <i>Script.log</i> file.</p>

If you remove power to the device, or there is a power outage or communication interruption during the transfer of the application, your device may become inoperative. If a communication interruption or a power outage occurs, reattempt

the transfer. If there is a power outage or communication interruption during a firmware update, or if an invalid firmware is used, your device will become inoperative. In this case, use a valid firmware and reattempt the firmware update.

NOTICE
<p>INOPERABLE EQUIPMENT</p> <ul style="list-style-type: none"> • Do not interrupt the transfer of the application program or a firmware change once the transfer has begun. • Re-initiate the transfer if the transfer is interrupted for any reason. • Do not attempt to place the device into service until the file transfer has completed successfully. <p>Failure to follow these instructions can result in equipment damage.</p>

Example

The following example configuration shows how to upgrade the firmware of TM3 analog expansion modules:

Slot Number	Reference	Description
0	TM3AI2H	TM3 Analog module with firmware version 26
1	TM3AI8G	TM3 Analog module with firmware version 24
2	TM3DI16	TM3 Digital expansion module with firmware version 18
...	TM3XTRA1/TM3XREC1	TM3 Transmitter/Receiver modules
3	TM3TI4G	TM3 Analog module with firmware version 26

The TM3 analog expansion modules must have a minimum version of 26 in order to receive a firmware update. In this example, a firmware update to version 27 can only be performed on the modules in slot numbers 0 and 3.

Recovery Procedure

This table describes how to reinitialize the firmware on TM3 digital, analog and TM3XTYS4 expansion modules:

Step	Action
1	<p>Ensure that the logic controller is in the <i>EMPTY</i> state by deleting the application in the logic controller. You can do this with EcoStruxure Machine Expert – Basic by using one of the following script commands:</p> <pre>Delete "/usr/*"</pre> <pre>Delete "/usr/app"</pre> <p>For details, refer to File Management Operations (see Modicon M221 Logic Controller, Programming Guide).</p>
2	Disassemble from the logic controller the TM3 expansion modules that are functioning normally, except for the first module to recover.
3	Apply power to the logic controller.
4	<p>Insert the SD card containing the firmware update into the logic controller.</p> <p>Result: The logic controller begins transferring the firmware file from the SD card to the module.</p>
5	<p>Wait until the SD LED is off or flashing.</p> <p>If an error is detected, the SD and ERR LEDs flash and the detected error is logged in <code>Script.log</code> file.</p>
6	Disassemble the recovered TM3 expansion module.
7	Assemble the next expansion module to recover.
8	Repeat steps 3 to 7 for the other expansion modules to recover.

Glossary

A

application:

A program including configuration data, symbols, and documentation.

C

configuration:

The arrangement and interconnection of hardware components within a system and the hardware and software parameters that determine the operating characteristics of the system.

controller:

Automates industrial processes (also known as programmable logic controller or programmable controller).

D

digital I/O:

(digital input/output) An individual circuit connection at the electronic module that corresponds directly to a data table bit. The data table bit holds the value of the signal at the I/O circuit. It gives the control logic digital access to I/O values.

E

expansion bus:

An electronic communication bus between expansion I/O modules and a controller or bus coupler.

F

function:

A programming unit that has 1 input and returns 1 immediate result. However, unlike FBs, it is directly called with its name (as opposed to through an instance), has no persistent state from one call to the next and can be used as an operand in other programming expressions.

Examples: boolean (AND) operators, calculations, conversions (BYTE_TO_INT)

H

HE10:

Rectangular connector for electrical signals with frequencies below 3 MHz, complying with IEC 60807-2.

I

I/O:

(input/output)

L

LED:

(light emitting diode) An indicator that illuminates under a low-level electrical charge.

N

NEMA:

(national electrical manufacturers association) The standard for the performance of various classes of electrical enclosures. The NEMA standards cover corrosion resistance, ability to help protect from rain, submersion, and so on. For IEC member countries, the IEC 60529 standard classifies the ingress protection rating for enclosures.

T

terminal block:

(terminal block) The component that mounts in an electronic module and provides electrical connections between the controller and the field devices.

Index

A

active I/O bus error handling.....	11
addressing	
when moving modules.....	23
analog inputs	
configuring.....	48
automatic	
start.....	70

B

bus speed.....	24
----------------	----

C

comments	
displaying.....	33
configuration	
TM3 analog I/O expansion modules.....	38
TM3 digital I/O expansion modules.....	37
TM3 expert I/O expansion modules.....	67
TM3 safety expansion modules.....	69
TM3 transmitter and receiver expansion modules.....	81
configuring	
analog inputs.....	48
digital inputs.....	30
digital I/Os.....	29
digital outputs.....	32
fallback.....	32
filter.....	30
latch.....	30

D

delay	
on.....	76
restart.....	76
device tree.....	36
diagnostic	
TM3 safety modules.....	76
diagnostic bytes (%IWS, %QWS).....	65
digital inputs	
configuring.....	30
functional mode.....	29
digital outputs	
configuring.....	32
displaying	
programming details.....	33

E

EcoStruxure Machine Expert - Basic	
device tree.....	36
hardware tree.....	23
project.....	23, 36
EDM	
external device monitoring.....	72
enable.....	75
expansion modules	
configuring.....	29
external device monitoring	
EDM.....	72

F

fallback	
configuring.....	32
filter	
configuring.....	30
firmware	
downloading to TM3 expansion modules.....	84
recovery procedure.....	86
functional mode	
digital inputs.....	29

H

hardware tree.....	23
--------------------	----

I

input channel status (%IWS).....	65
inserting a module.....	23
interlock.....	69
I/O bus error handling	
active.....	11–12
I/O bus speed.....	24
I/O configuration general information	
general practices.....	11
TM3 expansion modules.....	14
I/O expansion bus	
restarting.....	13
%IWS input channel status byte.....	65

L

latch.....	34
configuring.....	30
logic controller	
adding to EcoStruxure Machine Expert - Basic	
configuration.....	23, 36
adding transmitter/receiver.....	36
embedded I/Os.....	23

M

managing firmware.....	84
maximum number of modules.....	24
mixing module types.....	24
modules	
adding.....	23
inserting.....	23
maximum number of.....	24
mixing different types.....	24
removing.....	24
replacing.....	24
monitored	
start.....	70

N

non-monitored	
start.....	70

O

on	
delay.....	76
output	

response time	76	TM3 transmitter and receiver expansion modules	81
output channel status (%QWS).....	65	transmitter/receiver, adding	36
P			
passive I/O bus error handling	12		
power-on	74		
programming details			
displaying	33		
Q			
%QWS output channel status byte.....	65		
R			
removing a module	24		
replacing			
expansion module.....	24		
reset.....	69		
response time			
output	76		
restart			
delay	76		
restarting I/O expansion bus.....	13		
S			
start			
automatic	70		
monitored.....	70		
non-monitored	70		
%SW118	26		
%SW119	26		
%SW120	26		
symbols, displaying	33		
synchronization time.....	73		
system bits			
%S106	12		
%S107	13		
system words			
%SW118	26		
%SW119	26		
%SW120.....	26		
T			
TM3 analog I/O expansion modules	38		
TM3 analog I/O modules			
diagnostics	65		
TM3AI2H / TM3AI2HG	38		
TM3AI4 / TM3AI4G	39		
TM3AI8 / TM3AI8G	41		
TM3AM6 / TM3AM6G	58		
TM3AQ2 / TM3AQ2G	55		
TM3AQ4 / TM3AQ4G	56		
TM3TI4 / TM3TI4G	43		
TM3TI4D / TM3TI4DG.....	45		
TM3TI8T / TM3TI8TG	47		
TM3TM3 / TM3TM3G	61		
TM3 digital I/O expansion modules	37		
TM3 expert I/O expansion modules			
TM3XTYS4	67		
TM3 safety expansion modules	69		
TM3 safety modules			
diagnostic.....	76		

Schneider Electric
35 rue Joseph Monier
92500 Rueil Malmaison
France

+ 33 (0) 1 41 29 70 00

www.se.com

As standards, specifications, and design change from time to time, please ask for confirmation of the information given in this publication.

© 2025 Schneider Electric. All rights reserved.

EIO0000003345.05